

A close-up, black and white photograph of a bull's nose. The nose is the central focus, showing its textured, wrinkled skin. A large, silver metal ring is inserted into the nostril. The background is dark and out of focus, showing the texture of the bull's fur.

36TH ANNUAL  
**MADER**  
*Ranches*

**BULL  
POWER** SALE

FRIDAY, FEBRUARY 14th, 2025  
1 PM : AT THE RANCH, CARSTAIRS, AB

Welcome to our 36th Bull Power Sale!



We want to start by saying "thank you" to all our customers over the past year(s), many of you who are repeat buyers, and some of you who we have just gotten know! We can't express our gratitude for your confidence in our program and product, and we sincerely appreciate doing business with you, but mostly to call you, our friends. The cattle business is as tight of an industry as they come, and one of which we all work hard daily, to not only make ends meet on our own or to reach our own goals, but one to which we all work together to better the beef market place in Canada and worldwide! We also need to give a huge thank you to all our friends, family and workers who help make things possible for our family and our farm. As you all know, it takes a village to help raise children, and it seems to take the same village to help run a livestock operation with unknown schedules and never a lack of projects!

The cattle industry is at an all time high, with calf prices reaching ultimate levels, cull prices on cows and bulls being as good as ever, bred females topping the charts, and fat cattle futures continuing to rise! There is no better time to elevate your cowherd, and by purchasing top bulls, you will see a fast return on your investment! Utilize genetics, real time data, and top physical attributes to excel what you already doing, and to put more \$ in your pocket!

The offering of the bulls runs deep this year. We feel by utilizing embryo transplant, and using select sires on a mass scale, we have brought one of the most consistent set of bulls for your appraisal as ever. Many of the sires used are proven herd bulls or AI sires... This allows us the advantage versus using all new AI bulls as we can offer our customers advice on their bull choice(s), based on real life data and experiences from a previous calf crop. The same people you discuss your bull needs with, are the same people that do the calving, feeding, handling, and breeding selections on these bulls. You can trust in confidence, we will be honest and upfront, and can help you sort through them to find a bull(s) that meets your requirements and budget. Our goal is to develop these bulls and grow them out to a maturity level, where they can than go out and breed cows right away, not loosing a bunch of extra fat, and maintaining longevity. All bulls will be semen tested and evaluated prior to the sale by Dr. Waylon Wise.

Our cowherd consists of about 300 cows, with the majority of them calving in Jan and Feb, and about 100 that calve on grass in June and July. This allows us to offer yearling bulls and extra age bulls to meet the needs of our clientele. We cull hard on feet and legs, temperament, and udder quality in the herd. We are always trying source new genetics, so we can constantly offer new bloodlines and improve the herd and the bulls we offer.

We have now raised and sold purebred breeding stock for 50+ years, and with that said, we know the importance of good relationships, communication, and what it means to stand behind the product we offer. If you have any problem with something purchased from us, we want to be the first to know about it, and will do our utmost to create a win-win for both parties. Again, this year, we have set a pen of bulls aside for spares, and to ensure if any of our customers have an issue, we have you covered. Our bull warranty program is a great option for our customers, to ensure a replacement bull if injury or death shall occur in that first breeding season.

The sale is at the ranch, 10 miles west of Carstairs. There will be 86 bulls, purebreds, percentage, extra age. There will be a good mixture of calving ease bulls for heifers, and performance bulls for cows. Viewing, refreshments, and supper are offered the night before, and stick around after the sale for supper and visiting. We would love to have a chance to meet many of you in person and catch up with others we haven't seen in awhile!

See you February 14th!

Ryley and the whole Mader crew

## THE PEOPLE OF MADER RANCHES



### **RYLEY & JILL STELLA & HAWKIN MADER**

maderranches@gmail.com

Ryley's Cell: 403.807.8140

Jill's Cell: 403.990.9187

Ryley has been a part of the family operation from a young child and was joined by Jill in 2007. All 4 are hands on in the business activities and will look forward to many years in the cattle industry.



### **RANDY & RONDA MADER**

rrmader13@gmail.com

Randy's Cell: 403.660.1123

Randy & Ronda started Mader Ranches in 1975. They have worked hard in the cattle industry and see all aspects of the operation from day-to-day, management & mentorship.



### **CONNER JOHNSTONE**

Conner joined the team last year. He manages the feed wagon, mechanics, cattle health and assists with many other cattle tasks that make him a huge asset to our operation.

# WWW.MADERRANCHES.COM



## SCHEDULE ON OFFER

February 13th @ 4 PM :: Refreshments & Pizza  
 February 14th @ 12 Noon :: Beef Lunch  
 1 PM :: SALE TIME  
 Followed by Entertainment & Hospitality

66 Red & Black Simmental & SimAngus Yearlings  
 20 Red & Black Simmental & SimAngus Age Advantage

## SALE STAFF

Auctioneer :: Ryan Dorran :: 403.507.6483  
 Ringmen :: Mark Stock :: 403.357.8104  
 Rod Mcleod :: 403.540.7986  
 Taylor Richards :: 306.821.4169

## SALE MANAGER

Bohrson Marketing Services Ltd.  
 Scott Bohrson :: 403.370.3010  
 Taylor Richards :: 306.821.4169  
 Nate Marin :: 306.869.7130  
 Cody Haney :: 403.845.8806  
 Riley Bohrson :: 639.213.7777  
 www.bohrson.com

## ACCOMODATIONS

Ramada - Olds :: 403.507.8349  
 Pomeroy Inn & Suites - Olds :: 403.556.8815  
 Didsbury Country Inn - Didsbury :: 403.335.8088  
 Golden West Motor Inn - Carstairs :: 403.337.3333

## BUYER INCENTIVE

- \$200 taken off bull purchase price if you take them home sale day or within a week of sale day.

## PHOTOS & VIDEOS

- Taken in house by Mader Ranches
- Can be viewed online at [www.maderranches.com](http://www.maderranches.com)
- Bulls pictures are taken Dec /24
- Bulls Videos are taken Jan/25

## INSPECTION

Cattle may be viewed prior to the sale by arrangement made with Mader Ranches. Come to the bull farm and view bulls as well as their dams prior to February 12th. On February 13th the bulls will be penned at the sale barn and can be viewed there at that time.

## TERMS & CONDITIONS

PAGE 59

## SALE CREDITS

Register to bid sale day and be entered to win 1 of 5 - \$500 credits

## SUPPLEMENTARY INFO

A supplementary sheet will be available on sale day. This will include weights, scrotals and any updated information.

## DELIVERY

We offer free delivery to central points in Western Canada. If you are located past a convenient location in Canada, we will split delivery costs 50/50. For US purchases we will split the delivery costs and buyer is responsible for vet & border costs. We will start delivering on March 15th at our convenience, otherwise pick-up will be available at our Ranch. Free feed until delivery. Delivery is between March 15 - April 15th.

## DISCLAIMER

While every effort has been taken to ensure that all details are correct, the descriptions contained in this catalogue are often opinion only. We cannot be responsible for the consequences of any actions taken or not taken as a result of these opinions.

## HOW TO FIND US?

### Directions From Carstairs:

Go North on Main Street (10th Ave) out of town, Road automatically turns west(Twp Rd 303).  
 Go West 15 kms to Range Road 32.  
 Turn South. Ranch is on your right.

### Directions From Hwy 22:

Go East 11 kms on Twp Rd 303 (Carstairs Blind Line) to Range Road 32.  
 Turn South. Ranch is on your right.

**FIND US ON GOOGLE MAPS - Mader Ranches**



## NEW - VOLUME DISCOUNTS

- Buy 2 Bulls - Receive 2% off
- Buy 3 Bulls - Receive 3 % off
- Buy 4 Bulls - Receive 4 % off
- Buy 5 Bulls - Receive 5% off

There is nothing better than being at the sale in person. You get the opportunity to see the cattle, catch up with friends and meet new people! We hope you can join us, but if you can't make it we want to make it convenient for you to participate from where ever you may be!

**1. GIVE US A CALL**

We are all here to help you. We can talk with you about the cattle that interest you, logistics, and if you like we can even offer an opinion. We have our contact numbers listed on Page 2.

**2. PHONE BIDDING**

An option that works at all times. You can call any of us or a Bohrson Marketing Agent of your choice. We trust and value this team and encourage you to do the same.



Scott Bohrson :: 403.370.3010  
 Taylor Richards :: 306.821.4169  
 Nate Marin :: 306.869.7130  
 Cody Haney :: 403.845.8806  
 Riley Bohrson :: 639.213.7777

[www.bohrson.com](http://www.bohrson.com)

**3. BID AND VIEW ONLINE**

You can participate from almost anywhere with an internet connection. Please feel confident in using DLMS for your online viewing and bidding. If you have any questions, please contact our representative at DLMS, Mark Shologan 780.699.5082

## Can't make it to the sale? **Watch & Bid Online.**

**With DLMS you can Watch, Listen & Bid on your computer just like you were there with online bidding over the internet**

### Instructions for Viewing And Bidding At the Sale

Visit [www.dlms.ca](http://www.dlms.ca), Fill out the registration form located under registration and sign-up for your free user account to select a username and password.

**BIDDERS** - To be approved as a bidder, Log in and click BUYER APPROVAL tab, select the sale you are interested in bidding at and click sign up.

**For more information or for help getting approved Call:**

**Mark Shologan - 780-699-5082 or DLMS Purebred Team 780.991-3025**

Direct Livestock Marketing Systems  
*We're Making the Connection*



*To find an agent or sale near you today  
 visit [www.dlms.ca](http://www.dlms.ca)*

**Purebred Sales • Daily Presort Sales  
 Direct Off-farm Sales every Thursdays at 10:00 am**

## Breed Average EPD's

### Simmental

EPDs								
CE	BW	WW	YW	Milk	MCE	MWW	AP	TI
8.1	3.4	78.6	114.4	26.2	4.3	65.4	112.0	72.2

Carcass				
EPD	CWT	REA	Fat	Marb
	26.6	0.88	-0.09	-0.17



# BULL WARRANTY PROGRAM



We are pleased to offer a warranty program that is designed to help get your bull through the most critical first breeding season. Mader Ranches guarantees to sell you a bull that is structurally sound, a bull that has passed a breeding evaluation by a licensed veterinarian.

Should any Mader bull fail to be satisfactory breeder, unable to physically service a cow or heifer, he will be replaced with a bull of equal value. Should this not be possible, an adjustment will be made to reflect the value of the bull in question or a credit will be given towards the purchase of another bull.

Our warranty program offers a warranty in a language you can understand. While under our warranty your bull is covered for injury, sickness or death. We will service you needs with another bull or a credit to next years sale. Should you have any problem with a bull, contact Mader Ranches directly at 403.807.8140. We require your veterinarian to complete a report and email it to Mader Ranches. We will work with you to make sure your cows get serviced and your are satisfied with your purchase. We have back up bulls set aside for customers.

We offer the following which is the buyers responsibility to purchase at time of settlement:

**Duration - 6 months                      Rate - 6%**

Coverage – During Breeding Season:

This warranty covers injury, sickness or death. It does not include freezing semen.

In case of loss, Mader Ranches will not be responsible for anything up and above the purchase of the bull.

The program will cover 100% of the purchase price less salvage value when possible.

Employ a licensed veterinarian to treat, diagnose and/or fill out a vet form. If the animal dies, a post mortem will be required.

**Notify Ryley Mader immediately by phone 403.807.8140**

Mader Ranches is responsible to make settlement of an approved warranty claim with a suitable replacement.

Exclusions to Warranty:

Injury or death due to malicious, willful or intentional acts or mistreatment by you or your employees are fraudulent claims.

One thing that must be kept in mind, however, is that semen tests most accurately represent the status of sperm production on the day of the exam. If there is an injury, illness or any sort of significant stress that occurs subsequent to the exam the effect on the sperm picture could be enough to affect breeding performance. A new environment, a drastic change in feed quality, being placed in a pen with older bulls are just a few examples of stressors. Any failed breeding soundness evaluation within 6 months of the initial presale evaluation should be assessed in conjunction with the original, pre-sale examination including an independent assessment of both semen smears. In most cases, if the bull received a satisfactory classification on the first evaluation, and that classification was correct, then a subsequent questionable (decision deferred) or unsatisfactory classification is not the fault of the breeder.

**CREDIT ONLY NO CASH REFUNDS.**

Bulls that are not covered by this warranty option at the time of settlement will not be covered by Mader Ranches other than the breed guarantee standards set by the Canadian Simmental Association.

We highly recommend that bulls that remain at the farm until a later date are covered with our warranty program.

Bear in mind, we stress the importance of Mader Ranches Breeding Season Warranty.

**IF YOU CHOSE TO LEAVE YOUR BULL AT MADER RANCHES AFTER THE SALE, YOU MUST PURCHASE WARRANTY FROM MADER RANCHES OR A 3RD PARTY.**



Mader Ranches have their entire cow herd on an integrated and comprehensive health and production management program. This program is based on the detailed collection of data on each individual animal at all key health and production points. This information is kept in a secure web-enabled database called Herdtrax™ and is continually monitored and audited by the managing veterinarians at Cow/Calf Health and Management Services (CCHMS).

CCHMS is proud to work with Mader Ranches and if required will provide documentation and verification of all animal health processes and treatments. If there are any questions with respect to the health and production management program at Mader Ranches, please contact myself.

Sincerely,

Waylon Wise



Office: (403)946-4567  
Cell: (403)369-9823  
Fax: (403)946-5529  
drwwise@gmail.com



Waylon ultrasounding cows on summer pasture at Mader Ranches



When you focus on building a herd of exceptional females, the resulting bulls not only look the part but they breed it.

Some bulls look fantastic on the day, but it's not good enough to buy a bull on his looks alone. You are buying his potential. Yes, you should trust your eye first, but don't stop there. Study his pedigree, his EPD's, and any related animals. Make sure you look at his performance data, genetic testing and calving ease rating. We provide everything so that you can make an informed choice.

We also do this same homework on the bulls that we select. Talk to any of us! We not only have countless hours of hands on experience with these animals, but we have spent the time travelling, doing homework and visiting with other cattlemen and women. Our customers know that we have put in the effort to ensure the Mader Ranches bulls will go out and breed calves that make them profitable. Our homework is directly linked to your success.

We as a family are committed to the success of our customers. This means we raise and prepare our animals in a manner that promotes fitness and longevity of your new purchase.

The bulls developed on a TMR ration with bull supplement, chopped hay and straw, silage & supplements, minerals and vitamins. They are fed in large groups. They have been professionally developed for real-world commercial conditions. All data and complete performance info provided upon request and on sale day. Please remember that EPD's cannot be compared across breeds.

We have a Complete Herd Health & Vaccination Program with CCHMS - Waylon Wise (See above)  
Prior to the sale all bulls have been semen tested, palpated, scrotal measured, and inspected by Dr. Wise.

These bulls are fully guaranteed. Should a bull fail to be a satisfactory breeder, he will be replaced with another bull of equal quality or a credit will be given.

NO REFUNDS. Mader Ranches reserves the right to be the first to know about any problems you might have with your bull.

## MADER CALVING EASE RATINGS

3 ratings are used on the bulls to rate them for calving ease, the more stars, the more we recommend them used on heifers





# THE MADER RANCHES DIFFERENCE



## POLLED GENETICS

Horns are extra work, welfare and safety issues for cattle and cattlemen. Mader Ranches prides itself on its Polled genetics since 1975



## FAMILY OPERATION WITH LONG TIME COMMITMENT

The Mader Family has been in the cattle business for 48 years. This is the 36th Annual Bull Sale and plan on a extensive future with our 2nd and 3rd generation. We work hard to ensure our customers are happy with their investment. We are committed to helping our customers achieve their goals and we back our animals.



## HEART OF OUR HERD

We have a large nucleus of foundation females and pride ourselves in the cow families that extend down from that base. These bulls on offer are the top 86 bulls that we have to offer from 300 calving cows. They are the best of the best.



## DEPTH OF PEDIGREE

We utilize Embryo Transfer and AI extensively to multiply the consistency in our herd. We find that by reproducing multiple daughters and sons from our donor cows and breed leading sires, we can offer consistency to our customers.



## WEIGHTS

These bulls are being fed in order to reach their genetic potential. We really try to encourage fitness and longevity in our bulls. We are feeding our bulls for proper development of their body, feet and legs and reproductive organs.



## ACCURATE DATA

We have invested into cattle record keeping and management so that all of our data is as accurate as possible. We have our herd on the HerdTrax program as it integrates well with the Total Herd Enrollment with the Canadian Simmental Association. All data is available.

# PICTURE TAKING CREW



# SISTERS TO THE SALE BULLS

## 2024 FALL SALE HIGHLIGHTS FOR MADER RANCHES



SIRE: MADER WALK THE LINE  
Sold to River Rock Angus  
at Ladies Night for \$28,500



SIRE: MADER WALK THE LINE  
Sold to Havencrest Farms  
at Friday Night Lights for \$35,000



SIRE: RF SHAKEDOWN  
Sold to Sunny Valley Simmentals  
at Ladies Night for \$16,000



SIRE: MADER WALK THE LINE  
Sold to Downhill/TSN Livestock  
at Ladies Night for \$14,000



SIRE: MADER NIGHT SHIFT  
Sold to Heistad Ranch  
at Friday Night Lights for \$15,000



SIRE: RF SHAKEDOWN  
Sold to Chittick Farms  
at Ladies Night for \$12,500



SIRE: MADER WALK THE LINE  
Sold to Havencrest Farms  
at Ladies Night for \$16,000



SIRE: MADER WALK THE LINE  
Sold to Downhill Simmentals  
at Friday Night Lights for \$21,000



SIRE: MADER INFINITE 17J  
Sold to Triple R Simmentals  
at Ladies Night for \$10,500



SIRE: LFE HALL PASS 851G  
Sold to Oakview Simmentals  
at Ladies Night for \$13,000



SIRE: RF NO LIMITS  
Sold to LA Ranch  
at Friday Night Lights for \$12,000



SIRE: MADER THE NATIONAL  
Sold to Fraser & Heather Daley  
at Ladies Night for \$15,000



# REFERENCES SIRES

## MADER WALK THE LINE 92J

17 January 2021 • MDR 92J • PTG1358996

EPDs										
BW	205 Wt.	365 Wt.	CE	BW	WW	YW	Milk	MCE	MWW	
87	1042	1530	11.2	1.9	116.7	171.5	26.7	8.4	85.1	

Top 1% for WW, YW, MWWT, TI & CW  
Homo Polled

NCB COBRA 47Y  
MADER WALK THIS WAY 224B  
MADER P IRON SUGAR 7X  
MR HOC BROKER  
IRCC DARLIN' 613D  
DESTINY ODIN SHEA



## MADER WALK THIS WAY 224B

27 July 2014 • MDR 224B • BPTG1139930

EPDs										
BW	205 Wt.	365 Wt.	CE	BW	WW	YW	Milk	MCE	MWW	
84			11.8	0.4	96.0	151.5	29.5	9.6	77.5	

Top 1% for YWT, TI & MCE  
Top 10% for BW, WW, MCE & API  
Homo Polled, Hetero Black

LFE VIPER 455U  
NCB COBRA 47Y  
NCB MISS DREAM 22T  
MADER P BLACK IRONMAN 22U  
MADER P IRON SUGAR 7X  
LFE FAMOUS 632T



## RPLUS MANDATE 1044J

26 January 2021 • LRPS 1044J • BPG1344163

EPDs										
BW	205 Wt.	365 Wt.	CE	BW	WW	YW	Milk	MCE	MWW	
88	771	1579	9.1	2.0	78.0	129.8	20.3	3.3	59.3	

Top 15 % for YWT, CW, REA  
Homo Polled, Hetero Black

R PLUS 5015C  
R PLUS YUMA 9087G  
MISS R PLUS 3007A  
R PLUS BLACKEDGE  
MISS R PLUS 4193B  
LFE BS DAKOTA COAL 610P



## KWA INTERSTATE 203J

5 February 2021 • KWA 203J • BPG1378285

EPDs										
BW	205 Wt.	365 Wt.	CE	BW	WW	YW	Milk	MCE	MWW	
105	783	1578	11.1	2.7	86.5	144.7	26.3	5.4	69.6	

Top 3% for YWT, CW & REA  
Homo Polled, Homo Black

GLS INTEGRATE Z3  
HART INTERSTATE 102E  
HART MISS 138B  
SKORS HIGH ROLLER 34C  
CROWE BUTTON 20E  
LRX BUTTON 25C



## MADER NIGHT SHIFT 63K

12 January 2022 • MDR 63K • BPG1398065

EPDs										
BW	205 Wt.	365 Wt.	CE	BW	WW	YW	Milk	MCE	MWW	
88	1049	1483	6.9	3.6	105.5	141.8	23.5	4.5	76.3	

Top 1% for WW & TI, Top 10% for YW, MWWT & API  
Homo Polled & Black

NGDB STRUCTURE 34D  
RF SHAKEDOWN 074H  
IPU MS. COWBOY CUT 135D  
WHEATLAND HIGH OCTANE169Y  
MADER SUGAR CANE 48C  
MADER P IRON SUGAR 7X



## MADER SON OF ANARCHY 144H

6 February 2020 • MDR 144H • BPTG1318606

EPDs										
BW	205 Wt.	365 Wt.	CE	BW	WW	YW	Milk	MCE	MWW	
86	994	1440	11.4	1.3	81.8	120.3	18.5	4.6	59.4	

Top 20% for CE & BW  
Homo Polled, Homo Black

LFE GOTHAM 819Y  
LFE THE RIDDLER 323B  
LFE BS CHARO 23Y  
NCB COBRA 47Y  
LFE BS VIOLET 641A  
LFE BS VIOLET 128Z







1

RF SHAKEDOWN 074H  
**SIRE:** MADER NIGHT SHIFT 63K  
 MADER SUGAR CANE 48C  
 BGS/BM CAPTAIN SCREAM  
**DAM:** KCH VIOLET 910G  
 LFE BS VIOLET 641A



KCH VIOLET 910G



MATERNAL BROTHER OF LOT 1

# MADER NIGHT MOVES 113M

16 January 2024 • MDR 113M • BPG1473349

**Homo Polled, Hetero Black**

EPD	EPDs										Carcass EPDs		
	CE	BW	WW	YW	Milk	MCE	MWW	API	TI	CWT	REA	Fat	Marb
7.4	3.4	103.1	145.3	19.1	5.2	70.7	122.3	88.4	33.8	0.99	-0.07	0.07	
Breed Rank	60	50	2	4	90	40	25	20	2	20	20	90	15

BW	205 Wt.	365 Wt.	ADG	WPDA
88	900	1406	3.69	3.85

**CE**



-A real complete individual who exemplifies balance, stoutness, eye appeal, and added muscle shape  
 -Royally bred, sired by the \$100,000 Night Shift bull, and backed by a terrific Captain Scream cross LFE Violet 641A daughter  
 -Udders and feet are superior in this cow family, and the Violet influence is very heavy in our black program  
 -This bull is a meat machine, and an individual we have been very high on since a young age



2

RF SHAKEDOWN 074H  
**SIRE:** MADER NIGHT SHIFT 63K  
 MADER SUGAR CANE 48C  
 MADER THE NATIONAL 43E  
**DAM:** MADER LADY 14J  
 MADER LADY 80G



MADER NIGHT SHIFT 63K



MADER THE NATIONAL 43E

# MADER NIGHT HOWL 105M

14 January 2024 • MDR 105M • BPG1473346

**Homo Polled, Hetero Black**

EPD	EPDs										Carcass EPDs		
	CE	BW	WW	YW	Milk	MCE	MWW	API	TI	CWT	REA	Fat	Marb
8.6	3.0	102.1	147.2	24.6	5.9	75.7	133.5	91.5	31.3	1.01	-0.07	0.16	
Breed Rank	45	40	2	3	55	30	10	5	1	30	20	95	10

BW	205 Wt.	365 Wt.	ADG	WPDA
89	930	1406	3.36	3.80

**CE**



-Another highlight Night Shift son that is extensive throughout, fluid in his movement, and powerful in his phenotype  
 -His dam is a favorite, combining the Violet cow family with our Erixon Lady 202S cow family, where udder quality is superb  
 -Loads of maternal strength in him focussing on feet and udder quality, and females that have lots of easy doing ability  
 -He ranks in the top 3% for WW and YW



# 3

RF SHAKEDOWN 074H

**SIRE:** MADER NIGHT SHIFT 63K  
MADER SUGAR CANE 48C

LFE HEAVY HITTER 352C

**DAM:** MADER LACEY 20H  
MADER LACEY 24D



MATERNAL BROTHER OF LOT 3



MADER LACEY 24D

## MADER NIGHT OUT 28M

3 January 2024 • MDR 28M • BPG1473312

**Homo Polled, Homo Black**

EPD	EPDs								Carcass EPDs				
	CE	BW	WW	YW	Milk	MCE	MWW	API	TI	CWT	REA	Fat	Marb
7.6	3.0	97.0	137.3	23.0	5.7	71.5	124.2	87.4	31.1	0.95	-0.07	0.14	
Breed Rank	55	40	4	10	70	35	20	20	2	30	30	90	10

BW	205 Wt.	365 Wt.	ADG	WPDA
85	900	1350	3.52	3.65

**CE**



-A real soggy made bull who is loose hided, and carries extra depth of rib and muscle power  
 -The combo between Night Shift and Heavy Hitter really hit home here, adding extra pin spread, more muscle, and more pounds  
 -His dam is a top producer, always bringing in the big ones, and this bull will elevate any program  
 -A 900lb weaning weight and ranking in the top 10% for WW and YW  
 -He will be easily found sale day

# 4

RF SHAKEDOWN 074H

**SIRE:** MADER NIGHT SHIFT 63K  
MADER SUGAR CANE 48C

MADER PEARL HARBOUR 149F

**DAM:** MADER HONEY 67H  
MADER IRON HONEY 200C



MATERNAL SISTER OF LOT 4



MADER IRON HONEY 200C

## MADER NIGHT HAWK 60M

8 January 2024 • MDR 60M • BPG1473325

**Homo Polled, Homo Black**

EPD	EPDs								Carcass EPDs				
	CE	BW	WW	YW	Milk	MCE	MWW	API	TI	CWT	REA	Fat	Marb
7.0	2.9	89.6	123.7	19.9	4.9	64.7	120.9	81.9	24.9	0.99	-0.08	0.11	
Breed Rank	65	40	15	30	90	45	55	25	10	55	20	85	10

BW	205 Wt.	365 Wt.	ADG	WPDA
84	810	1352	3.93	3.59

**CE**



-A bull with added character and style, while still offering so much width of top, muscle expression, and overall quality  
 -He comes from a heavy milking cow, that seems to always crank out the good ones, and this one is no exception  
 -These Night Shift sons are such a complete and uniform group, it will be hard to sort through them, but this one stands out every tour through the pen  
 -Look at him to stamp his calves with a great look and added power



# 5



RF SHAKEDOWN 074H  
**SIRE:** MADER NIGHT SHIFT 63K  
 MADER SUGAR CANE 48C  
 LFE THE RIDDLER 323B  
**DAM:** MADER LACEY 24D  
 IPU MS RED LACEY 177S



MADER LACEY 24D



MATERNAL BROTHER OF LOT 5

## MADER NIGHT SHOW 16M

2 January 2024 • MDR 16M • BPG1473308

Polled, Homo Black

EPD	EPDs										Carcass EPDs		
	CE	BW	WW	YW	Milk	MCE	MWW	API	TI	CWT	REA	Fat	Marb
7.1	3.9	95.2	134.8	27.9	5.2	75.5	124.4	85.6	27.3	0.90	-0.08	0.14	
Breed Rank	60	60	10	15	35	40	10	15	3	45	45	90	10

BW	205 Wt.	365 Wt.	ADG	WPDA
94	890	1409	4.02	3.78

-We have really enjoyed watching this young prospect develop over the year, and feel he will be on the list for many  
 -From a masculine design, to a capacious body type, followed with a big hip and stout top  
 -His baldie dam has been the real deal in production, milking hard, carrying her body condition well, and being a low maintenance female  
 -You want a bull with a big foot, loads of maternal, and one that will be an easy keeper, this guy is your next herdsire



# 6



RF SHAKEDOWN 074H  
**SIRE:** MADER NIGHT SHIFT 63K  
 MADER SUGAR CANE 48C  
 LFE THE RIDDLER 323B  
**DAM:** MADER JUST FRIENDS 22D  
 WHEATLAND ENVY 281Z



MADER JUST FRIENDS 22D



MATERNAL BROTHER OF LOT 6

## MADER NIGHT FLIGHT 172M

13 February 2024 • MDR 172M • BPG1473376

Polled, Homo Black

EPD	EPDs										Carcass EPDs		
	CE	BW	WW	YW	Milk	MCE	MWW	API	TI	CWT	REA	Fat	Marb
8.2	3.0	91.3	130.5	23.3	5.3	69.0	127.2	84.3	24.1	0.89	-0.07	0.14	
Breed Rank	50	40	10	20	65	40	35	15	4	60	45	95	10

BW	205 Wt.	365 Wt.	ADG	WPDA
89	830	1395	3.44	3.87

-A young bull that makes up for days in age, with his pounds in performance  
 -He weaned off with an 830lb WW, ranks in the top 15% for WW and YW, and is built like a truck  
 -These Riddler cows, including his dam, are amongst our favorites, as they are heavy milkers, good footed, easy keeping mommas  
 -A stacked pedigree highlighting the Ironsugar donor with Envy lineage  
 -A compact meat machine that offers so much width of base, stoutness over the top, and depth and dimension  
 -Maternal brother last year sold to Campstool Cattle





# 7



RF SHAKEDOWN 074H  
**SIRE:** MADER NIGHT SHIFT 63K  
 MADER SUGAR CANE 48C  
 LFE THE RIDDLER 323B  
**DAM:** MADER CAT HOUSE 35D  
 DOWNHILL BLACK LADY 12W



## MADER NIGHT TRAIN 96M

13 January 2024 • MDR 96M • BPG1473340

**Homo Polled, Homo Black**

EPD	EPDs										Carcass EPDs		
	CE	BW	WW	YW	Milk	MCE	MWW	API	TI	CWT	REA	Fat	Marb
8.3	2.8	98.9	143.2	24.7	6.2	74.2	131.6	89.1	31.2	0.98	-0.08	0.13	
Breed Rank	50	40	3	5	55	25	15	10	1	30	25	90	10

BW	205 Wt.	365 Wt.	ADG	WPDA
84	900	1403	3.73	3.83

**CE**  
☆☆

-A performance oriented individual with added length and frame  
 -The 35D Riddler daughter is one of my personal favorite cows on the farm with her superior body type and ability to consistently raise a top son or daughter, a no miss cow  
 -This guy is super docile, travels on a great set of feet and legs, and very easy fleshing  
 -As you will notice, these Night Shift sons are so similar in type and kind, and they offer the advantage of moderate birthweights, high weaning weights, and the type and kind we all desire  
 -Maternal brother last year sold to Mike Waldner

# 8



RF SHAKEDOWN 074H  
**SIRE:** MADER NIGHT SHIFT 63K  
 MADER SUGAR CANE 48C  
 MRL EL TIGRE 52Z  
**DAM:** PERKS NINA 515F  
 PERKS NINA 215A



## MADER NIGHT RAVEN 66M

10 January 2024 • MDR 66M • BPG1473329

**Homo Polled, Hetero Black**

EPD	EPDs										Carcass EPDs		
	CE	BW	WW	YW	Milk	MCE	MWW	API	TI	CWT	REA	Fat	Marb
5.4	4.4	95.9	133.6	16.8	3.3	64.8	116.4	82.7	29.2	1.10	-0.09	0.08	
Breed Rank	80	70	5	15	100	65	55	35	10	35	10	70	15

BW	205 Wt.	365 Wt.	ADG	WPDA
89	840	1355	3.81	3.66

**CE**  
☆☆

-Maternal brother working for Klautd Ranches and Y2 Cattle  
 -This guys momma has been a bull producing machine, and a cow you really appreciate for her great foot, her level udder, her bold design, and ability to produce pounds  
 -A real nice skull and shoulder in this bull, he's soft middled, long spined, and really strides out well  
 -Night Shift is our past high selling bull in 2022 for \$100,000 to Canadian Sires and Sjogren Farms



# 9

RF SHAKEDOWN 074H

SIRE: MADER NIGHT SHIFT 63K  
MADER SUGAR CANE 48C

LRX THE GODFATHER 141Z

DAM: MADER OPAL 31C

CG BLACK OPAL 652S



MADER OPAL 31C



MATERNAL BROTHER OF LOT 9



## MADER NIGHT LIFE 164M

5 February 2024 • MDR 164M • BPG1473372

Homo Polled, Hetero Black

EPD	EPDs								Carcass EPDs				
	CE	BW	WW	YW	Milk	MCE	MWW	API	TI	CWT	REA	Fat	Marb
7.6	3.2	95.2	134.9	24.0	2.5	71.6	122.9	84.9	32.3	0.97	-0.09	0.08	
Breed Rank	55	45	10	15	60	80	20	20	4	25	25	65	15

BW	205 Wt.	365 Wt.	ADG	WPDA
86	832	1370	3.36	3.78

CE



-The Opal 31C cow is a beast in the flesh, and a beast in production. A cow that consecutively rips out a great one, and is hard to fault in person

-The Opal cow family is well known around here, and if you have followed along, you will note that she still has over 40 influenced females working in our herd, all with impeccable feet and udders

-This young stud has a nice spread from birth to weaning, starting at 86lbs, and weaning off at 840lbs

-Moderate, compact, hairy, docile, easy doing, and heavy muscled sum him up

-Maternal brother sold to Wolf Creek Farming last year for \$11,000

# LOT 10

RF SHAKEDOWN 074H

SIRE: MADER NIGHT SHIFT 63K  
MADER SUGAR CANE 48C

LRX THE GODFATHER 141Z

DAM: MADER OPAL 32C

CG BLACK OPAL 652S



MADER OPAL 32C



MATERNAL BROTHER OF LOT 10



## MADER NIGHT STORM 13M

2 January 2024 • MDR 13M • BPG1473307

Homo Polled, Homo Black

EPD	EPDs								Carcass EPDs				
	CE	BW	WW	YW	Milk	MCE	MWW	API	TI	CWT	REA	Fat	Marb
6.8	3.4	92.8	130.1	22.6	1.3	69.0	121.1	82.80	27.6	0.93	-0.09	0.08	
Breed Rank	65	50	10	20	70	90	30	25	10	45	35	65	15

BW	205 Wt.	365 Wt.	ADG	WPDA
77	790	1240	3.36	3.29

CE



-A full brother by blood to the bull above as their dams are full sisters

-This bull is a moderate meat machine, who shows extra maturity, added width over that top, and so much lower stifle muscle

-If you're looking to add more raw muscle expression and width to your herd, look no further

-His steers will top the scales, and his daughters will be hard to part with



# 11

RF SHAKEDOWN 074H

SIRE: MADER NIGHT SHIFT 63K  
MADER SUGAR CANE 48C

LFE BS LEWIS 322U

DAM: MADER PROMISELAND 19B  
CROSSROAD SIERRA 524S



MADER PROMISELAND 19B



MATERNAL BROTHER OF LOT 11

## MADER NIGHT RIDER 56M

8 January 2024 • MDR 56M • BPG1473322

Homo Polled, Homo Black

EPD	EPDs										Carcass EPDs		
	CE	BW	WW	YW	Milk	MCE	MWW	API	TI	CWT	REA	Fat	Marb
9.4	2.3	83.2	114.5	23.1	5.2	64.7	126.9	79.6	17.8	0.88	-0.08	0.11	
Breed Rank	35	30	30	50	65	40	55	15	15	85	50	90	10

BW	205 Wt.	365 Wt.	ADG	WPDA
85	830	1351	3.85	3.62

**CE**  
☆☆

-Another cow that has had many sons sell through this very sale as highlights  
 -An easy fleshing bull with added spring and depth of rib to him, he's extremely docile and easy to handle, and he will add that softness to his progeny  
 -The Night Shift sons are so consistent in their type and kind, and the replacement pen is power packed with an outstanding set of daughters  
 -A great haircoat, adequate bone, big foot, and one that will be easy to look at for years to come

# 12

RF SHAKEDOWN 074H

SIRE: MADER NIGHT SHIFT 63K  
MADER SUGAR CANE 48C

BROOKING FIREBRAND 606B

DAM: MADER TIMELESS 54H  
MADER CAT HOUSE 35D



BROOKING FIREBRAND



MATERNAL BROTHER OF LOT 12

## MADER NIGHT TIDE 160M

3 February 2024 • MDR 160M • BPRS1473369

Homo Polled, Homo Black

EPD	EPDs										Carcass EPDs		
	CE	BW	WW	YW	Milk	MCE	MWW	API	TI	CWT	REA	Fat	Marb
7.3	2.9	99.4	143.3	25.8	5.6	75.5	116.2	84.9	34.7	0.83	-0.05	0.16	
Breed Rank	60	40	3	5	50	35	10	35	4	15	65	100	10

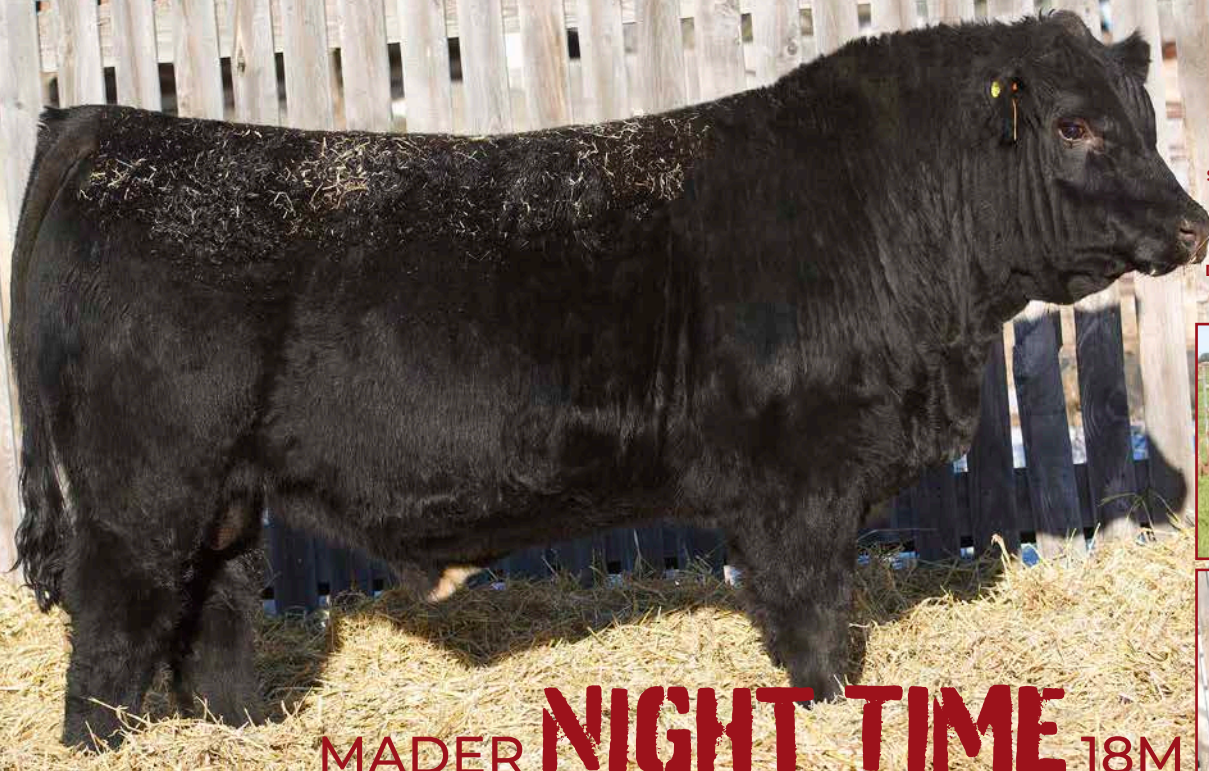
BW	205 Wt.	365 Wt.	ADG	WPDA
87	869	1407	3.36	3.87

**CE**  
☆☆

-A 3/4 blood bull here that boasts a great birthweight to weaning weight spread of 87lbs to 880lbs  
 -He has the nice small skull and smooth front end of his Firebrand dam, yet explodes into a lot of body capacity, barrel, and hip strength  
 -His grandma, is the dam of lot 7, and his dam 54H, patterns so much like her with an elegant body design, near perfect teet size and udder suspension, and a great foot  
 -This guy will calve easy yet still maintain performance oriented offspring



# 13



## MADER NIGHT TIME 18M

2 January 2024 • MDR 18M • BPG1473310

Homo Polled, Homo Black

RF SHAKEDOWN 074H  
SIRE: MADER NIGHT SHIFT 63K  
MADER SUGAR CANE 48C  
CCR COWBOY CUT 5048Z  
DAM: RPCC BLK GODDESS 207G  
RPCC BLK X'S & O'S ET203X



RPCC BLK GODDESS 207G



MATERNAL BROTHER OF LOT 13

EPD	EPDs								Carcass EPDs				
	CE	BW	WW	YW	Milk	MCE	MWW	API	TI	CWT	REA	Fat	Marb
8.4	3.3	95.2	135.2	25.9	5.3	73.5	134.3	87.9	27.3	0.90	-0.07	0.21	
Breed Rank	50	45	10	15	45	40	15	5	2	45	45	95	5

BW	205 Wt.	365 Wt.	ADG	WPDA
89	820	1287	3.52	3.42

CE  
☆☆

-Two full brothers here that pattern very similar in that they both exemplify added length and frame  
-Their Cowboy Cut dam has been a very reliable producer for us, and will continue to be a cornerstone female  
-A pair of bulls that would work well on adding some stretch to their offspring, along with passing on great milk, weaning weights, and docility

# LOT 14



## MADER NIGHT WARRIOR 19M

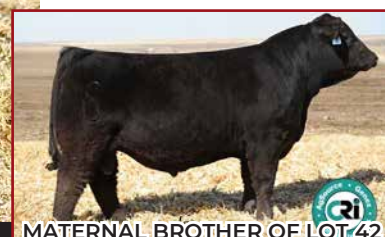
2 January 2024 • MDR 19M • BPG1473311

Homo Polled, Homo Black

RF SHAKEDOWN 074H  
SIRE: MADER NIGHT SHIFT 63K  
MADER SUGAR CANE 48C  
CCR COWBOY CUT 5048Z  
DAM: RPCC BLK GODDESS 207G  
RPCC BLK X'S & O'S ET203X



MADER NIGHT SHIFT 63K



MATERNAL BROTHER OF LOT 42

EPD	EPDs								Carcass EPDs				
	CE	BW	WW	YW	Milk	MCE	MWW	API	TI	CWT	REA	Fat	Marb
8.4	3.3	95.2	135.2	25.9	5.3	73.5	134.3	87.9	27.3	0.90	-0.07	0.21	
Breed Rank	50	45	10	15	45	40	15	5	2	45	45	95	5

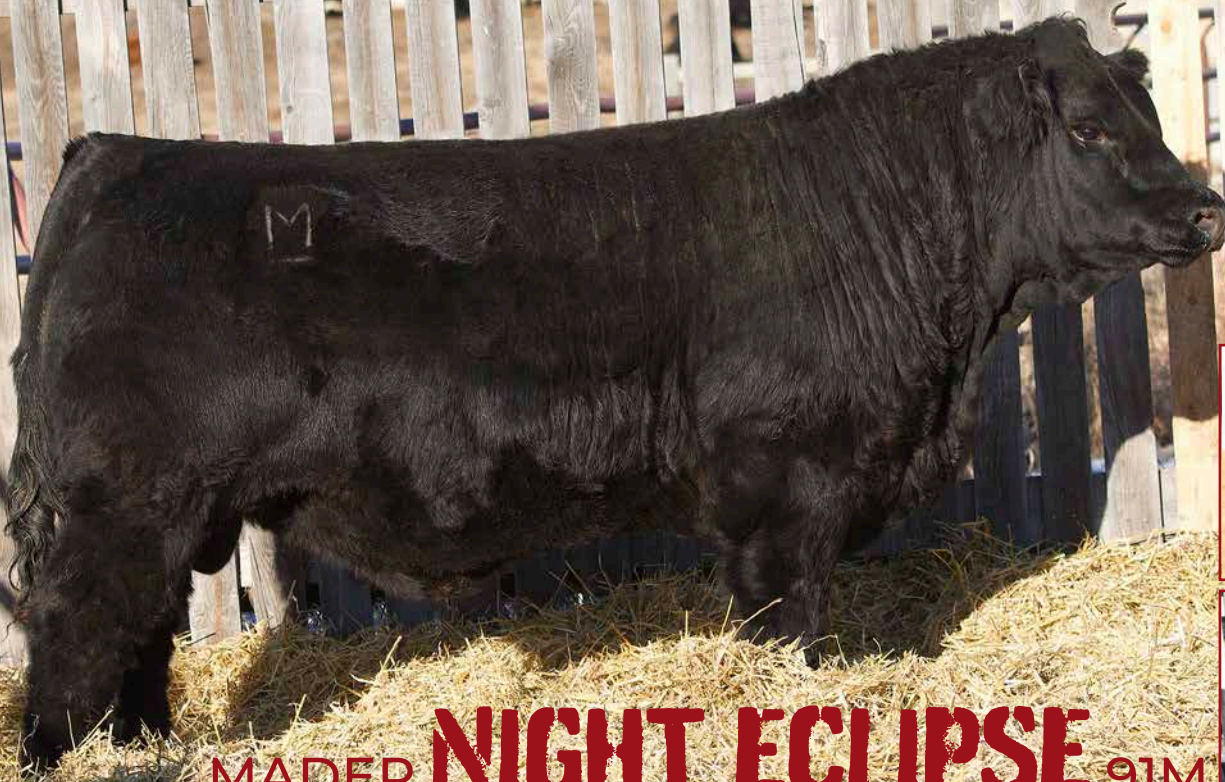
  

BW	205 Wt.	365 Wt.	ADG	WPDA
84	800	1297	3.69	3.42

CE  
☆☆



# 15



RF SHAKEDOWN 074H  
**SIRE:** MADER NIGHT SHIFT 63K  
 MADER SUGAR CANE 48C  
 LFE THE RIDDLER 323B  
**DAM:** MADER BLACKGOLD 72F  
 MADER BLACKGOLD 8B



MADER BLACKGOLD 72F



MATERNAL BROTHER OF LOT 15

## MADER NIGHT ECLIPSE 91M

12 January 2024 • MDR 91M • BPG1473338

**Homo Polled, Homo Black**

EPD	EPDs										Carcass EPDs			
	CE	BW	WW	YW	Milk	MCE	MWW	API	TI	CWT	REA	Fat	Marb	
7.4	3.2	96.4	138.4	23.7	5.0	71.9	128.7	87.6	30.3	0.95	-0.8	0.16		
Breed Rank	60	45	5	10	65	45	20	10	2	30	30	90	10	

BW	205 Wt.	365 Wt.	ADG	WPDA
83	880	1406	3.89	3.82

**CE**



-A maternal brother last year sold to Lyndon Creek Ranch  
 -This guy is packed full of shape, being explosive in his muscle pattern, and wide through his pins and quarter  
 -The Riddler females are among our favorites, out producing themselves year after year  
 -Just and 83lb birthweight weaning off at 880lbs

# 16



NGDB STRUCTURE 34D  
**SIRE:** RF SHAKEDOWN 074H  
 IPU MS. COWBOY CUT 135D  
 CG BLACK NUGGET 25N  
**DAM:** CG BLACK OPAL 652S  
 CG BLACK OPAL 214 M



RF SHAKEDOWN 074H



FULL BROTHER OF LOT 16

## MADER GLADIATOR 178M

13 February 2024 • MDR 178M • BPTG1473612

**Homo Polled, Homo Black**

EPD	EPDs										Carcass EPDs			
	CE	BW	WW	YW	Milk	MCE	MWW	API	TI	CWT	REA	Fat	Marb	
3.5	5.9	92.3	126.6	21.5	1.7	67.7	127.4	83.1	27.0	0.66	-0.8	0.28		
Breed Rank	90	90	10	25	80	85	40	15	10	45	95	85	2	

BW	205 Wt.	365 Wt.	ADG	WPDA
86	809	1307	3.11	3.62

**CE**



-One of the last chances to acquire a direct son of the Opal 652S donor  
 -A younger bull offering a lot of thickness and top, he is sound footed and athletic, and has that herdbull presence  
 -You will want to retain every daughter off this guy, as the udders and teet size, and foot quality, will be well above the breeds standards  
 -The Opal sons have been in hot demand for many years, don't miss your opportunity to own one





-An interesting trio off of the Violet 49H female  
KCH Cattle  
-Violets first few progeny knocked it out of the top  
Ranches for \$48,000, another being last year  
for \$52,000  
- The foot and udder quality she passes on is  
design, and style and presence  
-Lot 17 is the natural calf off the Violet cow, so  
dimension, structural correctness, style, and  
some performance  
-Lot 18 is an embryo calf by R Plus Mandate,  
the Violets being short gestation, he could work  
together  
-Lot 19 is an embryo calf as well, making him  
Folsom Prison who is being used extensively  
in his design, broad based, and really is the top  
heifers and on the cowherd

# MADER TRIGGER WARNING

2 February 2024 • MDR 157M • BPG1473367

**Homo Polled, Homo Black**

**CE**  
☆☆

RF SHAKEDOWN 074H  
SIRE: MADER NIGHT SHIFT 63K  
MADER SUGAR CANE 48C  
TJSC BOONE PICKENS 46C  
DAM: MADER VIOLET 49H  
LFE BS VIOLET 641A

EPD	EPDs										Carcass EPDs							
	CE	BW	WW	YW	Milk	MCE	MWW	API	TI	CWT	REA	Fat	Marb	BW	205 Wt.	365 Wt.	ADG	WPDA
Breed Rank	9.4	1.9	80.5	118.0	20.3	5.7	60.6	131.3	80.5	16.3	0.86	-0.07	0.19	86	720	1366	4.10	3.65



MATERNAL BROTHER OF LOT 17-19



MATERNAL BROTHER OF LOT 17-19



MATERNAL BROTHER OF LOT 17-19



MATERNAL BROTHER OF LOT 17-19



# MADER PAIN

11 January 2024 •

EPD	EPDs										Carcass EPDs							
	CE	BW	WW	YW	Milk	MCE	MWW	API	TI	CWT	REA	Fat	Marb	BW	205 Wt.	365 Wt.	ADG	WPDA
Breed Rank	12.3	1.6	94.6	146.7	22.3	8.6	69.6	131.2	86.3	29.7	1.07	-0.09	0.00	84	875	1410	3.89	3.65

**Homo Polled**



ale, that demanded \$92,000 for half interest to  
 he park, one being a female selected by KT  
 rs high selling bull to Canadian Sires and syndicate  
 superb, along with the depth of rib, angular  
 ired by the dominant Night Shift, he shows a lot of  
 overall balance. He offers calving ease along with  
 he offers a great deal of calving ease, and with  
 work in the heifer pen. Hairy, quiet, and well put  
 a full brother to last years \$52,000 high seller,  
 in our program. This guy is huge ribbed, bold  
 en pet. We are utilizing the full brother on both



# MADER CONCLAVE 61M

8 January 2024 • MDR 61M • BPTG1473596

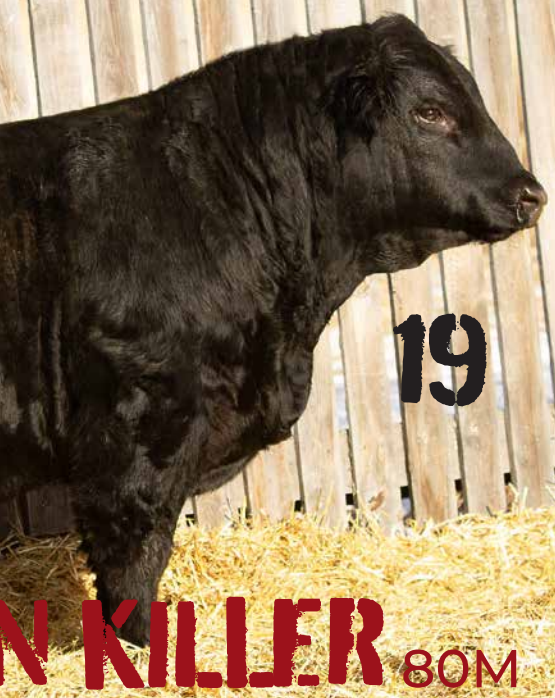
R PLUS YUMA 9087G  
**SIRE** R PLUS MANDATE 1044J  
 MISS R PLUS 4193B

**Homo Polled, Homo Black**

TJSC BOONE PICKENS 46C  
**DAM** MADER VIOLET 49H  
 LFE BS VIOLET 641A

**CE**  
 ☆☆☆

EPD	EPDs										Carcass EPDs			BW	205 Wt.	365 Wt.	ADG	WPDA
	CE	BW	WW	YW	Milk	MCE	MWW	API	TI	CWT	REA	Fat	Marb					
8.6	1.7	73.3	115.8	17.4	5.2	54.1	117.3	71.2	31.4	1.05	-0.12	-0.05	92	710	1314	4.22	3.41	
Breed Rank	45	20	75	50	100	40	100	35	55	30	10	15	50					



# N KILLER 80M

MDR 80M • BPTG1473600

MADER WALK THIS WAY 224B  
**SIRE** MADER WALK THE LINE 92J  
 IRCC DARLIN' 613D

**CE**  
 ☆☆☆

TJSC BOONE PICKENS 46C  
**DAM** MADER VIOLET 49H  
 LFE BS VIOLET 641A

**Polled, Hetero Black**





# 20

KWA LAW MAKER 59C

**SIRE:** WRC GREAT GATSBY 3321 ET  
WRC CERTAINLY FLIRTIN 18E

WHEATLAND HIGH OCTANE169Y

**DAM:** MADER SUGAR CANE 48C  
MADER P IRON SUGAR 7X



MADER SUGAR CANE 48C



MATERNAL BROTHER OF LOT 20 & 21

## MADER VENOM 158M

2 February 2024 • MDR 158M • BPG1473368

**Homo Polled, Hetero Black**

EPD	EPDs								Carcass EPDs				
	CE	BW	WW	YW	Milk	MCE	MWW	API	TI	CWT	REA	Fat	Marb
9.9	2.3	77.5	120.7	26.1	4.1	64.9	121.5	76.1	28.8	1.15	-0.06	0.05	
Breed Rank	35	30	55	35	45	55	55	25	25	40	3	95	20

BW	205 Wt.	365 Wt.	ADG	WPDA
85	790	1337	3.52	3.65

**CE**  
☆☆

-A very interesting bull on paper, combining breed matrons such as KWA MS Rock 14X, RF Certainly Flirtin 202Z, Wheatland Lady 351N, and Mader Ironsugar 7X  
 -Power packed with maternal strength, and power packed with loads of body capacity, width and stoutness, and muscle definition  
 -This would be the natural calf off the Sugar Cane 48C donor, which makes him the maternal brother to the \$100,000 Mader Night Shift sire  
 -He will throw heavy, soft made steer calves, while maintaining the right tools to keep every daughter off of him

# 21

R PLUS YUMA 9087G

**SIRE:** R PLUS MANDATE 1044J  
MISS R PLUS 4193B

WHEATLAND HIGH OCTANE169Y

**DAM:** MADER SUGAR CANE 48C  
MADER P IRON SUGAR 7X



MATERNAL BROTHER OF LOT 20 & 21



MATERNAL BROTHER OF LOT 20 & 21

## MADER FORGE 72M

10 January 2024 • MDR 72M • BPTG1473599

**Homo Polled, Homo Black**

EPD	EPDs								Carcass EPDs				
	CE	BW	WW	YW	Milk	MCE	MWW	API	TI	CWT	REA	Fat	Marb
8.6	1.6	79.2	130.4	23.2	5.4	62.8	116.1	75.7	33.3	1.32	-0.11	-0.07	
Breed Rank	45	20	50	20	65	40	65	35	30	20	1	30	60

BW	205 Wt.	365 Wt.	ADG	WPDA
87	900	1352	3.44	3.70

**CE**  
☆☆

-A real smooth made bull that offers the added length Mandate passes on, still while offering adequate width, bone, and performance  
 -With a 87lb birthweight and a 900lb actual weaning weight, look for this bull to calf easy and offer extra growth  
 -The Mandate sons were very consistent and popular last spring, and adding in the great maternal characteristics Sugar Cane and the whole Ironsugar cow family does, you will want to hold onto daughters



# 22

R PLUS YUMA 9087G

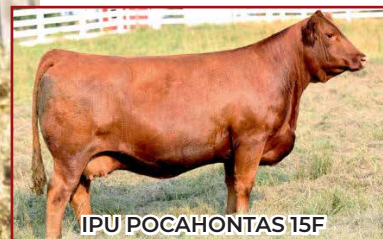
SIRE: R PLUS MANDATE 1044J

MISS R PLUS 4193B

SVS BROOKS 669D

DAM: IPU 2D POCAHONTAS 15F

IPU 105L POCAHONTAS 2D



IPU POCAHONTAS 15F



MATERNAL SISTER OF LOT 22



## MADER BORDERLAND 142M

23 January 2024 • MDR 142M • BPTG1473609

Homo Polled, Hetero Black

EPD	EPDs										Carcass EPDs			
	CE	BW	WW	YW	Milk	MCE	MWW	API	TI	CWT	REA	Fat	Marb	
7.3	2.9	82.3	128.7	20.6	4.3	61.8	100.7	70.6	35.4	0.95	-0.12	-0.22		
Breed Rank	60	40	35	20	85	55	70	85	60	15	30	25	100	

BW	205 Wt.	365 Wt.	ADG	WPDA
90	830	1435	4.14	3.88

**CE** ☆☆

-A pen favorite here, offering extra style, extension, mass and capacity, he is super sound structured, and travels with ease  
 -A highlight son out of the \$27,000 donor we acquired from Labatte Simmentals, stemming back to their great Pocohontas 105L donor  
 -He is a performance oriented bull that should really ring the bell in production, carrying loads of maternal strength and the physical attributes that check so many boxes

# 23

R PLUS YUMA 9087G

SIRE: R PLUS MANDATE 1044J

MISS R PLUS 4193B

RF CALIBER 014G

DAM: LFE BS LEWIS KATATINA 16K

LFE BS KATARINA 666E



LFE BS LEWIS KATATINA 16K



PATERNAL BROTHER OF LOT 23



## MADER APPRENTICE 99M

13 January 2024 • MDR 99M • BPG1473601

Homo Polled, Homo Black

EPD	EPDs										Carcass EPDs			
	CE	BW	WW	YW	Milk	MCE	MWW	API	TI	CWT	REA	Fat	Marb	
10.8	2.5	99.9	158.3	18.3	7.1	68.3	119.1	84.1	40.2	1.05	-0.08	-0.41		
Breed Rank	25	35	3	1	95	15	35	30	4	10	15	85	85	

BW	205 Wt.	365 Wt.	ADG	WPDA
93	920	1520	3.93	3.95

**CE** ☆☆

-A very performance driven herd bull here that carries that extra length and frame on a very balanced and structurally sound skeleton  
 -These Mandate sons have great foot quality and a great look to them, and you combine that with a beautifully constructed Caliber female, you have the whole package  
 -His dam was purchased through the Friday Night Lights sale for \$28,000, this being an embryo calf off of her, and she has turned into a true donor feature  
 -He will add pounds to his offspring



# 24

R PLUS YUMA 9087G

SIRE: RF NO LIMITS 1112J

RUST MISS 6217D

MR HOC BROKER

DAM: IRCC DARLIN' 613D

DESTINY ODIN SHEA



IRCC DARLIN' 613D



MATERNAL BROTHER OF LOT 42

## MADER UPPER LIMIT 170M

10 February 2024 • MDR 170M • BPTG1473610

Homo Polled, Hetero Black

EPD	EPDs								Carcass EPDs				
	CE	BW	WW	YW	Milk	MCE	MWW	API	TI	CWT	REA	Fat	Marb
5.7	2.8	89.0	129.5	26.3	2.7	70.8	108.5	81.4	28.3	1.05	-0.11	0.05	
Breed Rank	75	40	15	20	45	75	25	60	10	40	10	35	20

BW	205 Wt.	365 Wt.	ADG	WPDA
90	750	1317	3.52	3.62

**CE** ★★

-An attractive made son out of the popular RF No Limits sire and backed by our leading donor, IRCC Darlin 613D

-Note that he is just a middle of February embryo born bull, offering adequate growth, but a whole lot of eye appeal, structural integrity, and maternal strength

-The Darlin 613D cow rings the bell every time, and with an udder, foot, and body design like she offers, you will be needing to keep his daughters

# 25

R PLUS YUMA 9087G

SIRE: RF NO LIMITS 1112J

RUST MISS 6217D

MR HOC BROKER

DAM: IRCC DARLIN' 613D

DESTINY ODIN SHEA



RF NO LIMITS 1112J



FULL SISTER OF LOT 24 & 25

## MADER LIMIT BREAKER 90M

12 January 2024 • MDR 90M • BPTG1473337

Homo Polled, Hetero Black

EPD	EPDs								Carcass EPDs				
	CE	BW	WW	YW	Milk	MCE	MWW	API	TI	CWT	REA	Fat	Marb
5.3	5.9	108.1	162.7	26.3	2.6	80.4	107.6	88.2	49.1	1.33	-0.09	0.00	
Breed Rank	80	90	1	1	45	75	2	65	2	1	1	60	35

BW	205 Wt.	365 Wt.	ADG	WPDA
102	950	1458	3.81	3.99

**CE** ★

-This bull is full of red meat and mass, and will really put the pounds on his offspring

-An actual weaning of 950lbs, yearling of 1460lbs, and he ranks in the top 1% for both WW and YW -He is an IVF embryo out of the great Darlin 613D donor, take note that we saw a longer gestation on the two brothers being invitro, hence some added pounds to their birthweights

-These two brothers along with 4 red brothers, are maternal brothers to the \$280,000 breeding legend, Mader Walk The Line

-This guy is more hesitant when singled out and pressured, but fine in the group. He needs to go to someone who has the space to send him out to work and handles their cattle in bigger groups



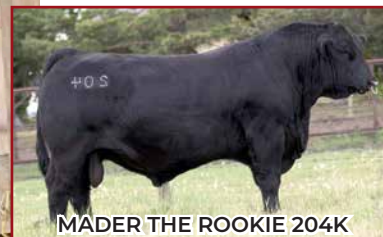
# 26

MADER WALK THIS WAY 224B

SIRE: MADER THE ROOKIE 204K  
MADER SHEILA 151H

LFE HEAVY HITTER 352C

DAM: MADER KITTY CAT 76G  
MADER CAT HOUSE 35D



MADER THE ROOKIE 204K



MADER KITTY CAT 76G



## MADER THE STARTER 183M

14 February 2024 • MDR 183M • BPG1473380

Homo Polled, Homo Black

EPD	EPDs								Carcass EPDs				
	CE	BW	WW	YW	Milk	MCE	MWW	API	TI	CWT	REA	Fat	Marb
8.3	3.5	90.4	137.8	18.6	7.0	63.8	116.5	78.9	28.5	0.91	-0.09	-0.04	
Breed Rank	50	50	15	10	95	20	60	35	15	40	40	65	50

BW	205 Wt.	365 Wt.	ADG	WPDA
95	790	1411	3.77	3.88

CE  
☆☆

-One of the first sons to sell off of our new herd sire, Mader the Rookie  
 -Although Rookie is being heavily utilized in the heifer pen now, we have bred him to some big cows to offer some calving ease onto performance driven cows  
 -Rookie was kept back as the replacement to Mader Walk this Way, his sire, as he also is combined with a Boone Pickens cross LFE Sheila 82A daughter, to add extended maternal strength  
 -This bull is nice skulled and smooth shouldered, yet offers piles of top and width throughout, all on a very correct design

# 27

WS PROCLAMATION E202

SIRE: MADER KISS THIS 93K  
MADER VIOLET 49H

WHEATLAND FRONT RUNNER

DAM: MADER RACHEL 14K  
DHS MS RACHEL 4H



MADER KISS THIS 93K



## MADER KISS OF FIRE 190M

23 February 2024 • MDR 190M • BPG1491395

Homo Polled, Hetero Black

EPD	EPDs								Carcass EPDs				
	CE	BW	WW	YW	Milk	MCE	MWW	API	TI	CWT	REA	Fat	Marb
5.8	1.2	79.0	117.8	22.6	-0.5	62.1	123.3	79.6	22.2	0.70	-0.08	-0.36	
Breed Rank	75	15	50	45	70	100	70	20	15	65	90	90	5

BW	205 Wt.	365 Wt.	ADG	WPDA
86	815	1415	2.99	3.77

CE  
☆☆

-Here is a bull that would sure work well on some bigger heifers or first calvers to reduce birthweight and enhance calving ease  
 -His sire, Kiss This, is a son out of the well proven calving ease sire Proclamation, along with being out of the legendary Violet 49H who offers shorter gestation  
 -Just off a first calf heifer, and he boasts a weaning weight of 815lbs  
 -He is masculine built with good depth of body, still while maintaining a light bone column and smoother shoulder



# 28



TJSC BOONE PICKENS 46C  
**SIRE:** MADER SON OF ANARCHY 144H  
 LFE BS SHEILA 82A  
 MADER WALK THIS WAY 224B  
**DAM:** MADER RAMONA 806J  
 MADER RAMONA 155F



SON OF ANARCHY 144H



TJSC BOONE PICKENS

## MADER **ROCK STAR** 4M

1 January 2024 • MDR 4M • BPG1473303

**Homo Polled, Hetero Black**

EPD	EPDs										Carcass EPDs		
	CE	BW	WW	YW	Milk	MCE	MWW	API	TI	CWT	REA	Fat	Marb
10.5	2.0	98.3	144.3	23.5	7.1	72.7	119.9	82.9	30.2	1.00	-0.09	-0.17	
Breed Rank	25	25	4	5	65	15	15	25	10	30	20	60	90

BW	205 Wt.	365 Wt.	ADG	WPDA
80	980	1354	3.03	3.69

**CE**  
☆☆☆

-A calving ease candidate that also offers exceptional growth  
 -He has a tremendous birth to weaning spread, starting at 80lbs out of a first calver, and weaning off at 980lbs, also ranking in the top 25% for BW and CE, and top 5% for WW and YW  
 -His pedigree speaks pretty true to the heifer pen being a Son of Anarchy himself, out of a Walk This Way female, both sires heavily used here on heifers and in our summer program  
 -His dam is a capacious, great footed with an ideal udder type of cow, and he offers so much softness, muscle, docility, and functionality

# 29



TJSC BOONE PICKENS 46C  
**SIRE:** MADER SON OF ANARCHY 144H  
 LFE BS SHEILA 82A  
 RF SHAKEDOWN 074H  
**DAM:** MADER GODDESS 129K  
 RPCC BLK GODDESS 207G



RPCC BLK GODDESS 207G



RF SHAKEDOWN

## MADER **LEGENDARY** 55M

8 January 2024 • MDR 55M • BPG1473321

**Homo Polled, Homo Black**

EPD	EPDs										Carcass EPDs		
	CE	BW	WW	YW	Milk	MCE	MWW	API	TI	CWT	REA	Fat	Marb
10.1	2.5	90.4	130.1	19.9	5.9	65.1	122.2	79.9	23.2	0.78	-0.07	-0.04	
Breed Rank	30	35	15	20	90	30	55	20	15	60	75	90	50

BW	205 Wt.	365 Wt.	ADG	WPDA
80	820	1351	3.52	3.48

**CE**  
☆☆☆

-Another Son of Anarchy son that would sure work well in the heifer pen, being an 80lb birthweight himself out of a first calf heifer  
 -He ranks in the top 30% for CE and BW, while still holds above average performance data, being in the top 20% for WW and YW, and boasting a 820lb actual weaning weight  
 -Smooth made bull that still offers good body substance, muscle expression, correctness, and is super quiet natured



# 30

TJSC BOONE PICKENS 46C

**SIRE:** MADER SON OF ANARCHY 144H  
LFE BS SHEILA 82A

MADER WALK THIS WAY 224B

**DAM:** MADER ZOEY 817J

MADER ZOEY 80F



MADER WALK THIS WAY



LFE BS SHEILA 82A

## MADER PHOENIX 100M

13 January 2024 • MDR 100M • BPG1473342

**Homo Polled, Homo Black**

EPD	EPDs								Carcass EPDs				
	CE	BW	WW	YW	Milk	MCE	MWW	API	TI	CWT	REA	Fat	Marb
8.5	4.8	103.5	154.0	23.1	5.4	74.9	113.0	83.2	33.8	1.03	-0.08	-0.14	
Breed Rank	45	75	1	2	65	40	10	45	10	20	15	80	85

BW	205 Wt.	365 Wt.	ADG	WPDA
95	930	1444	3.61	3.87

**CE**  
☆☆☆

-A real powerhouse bull that expresses so much muscle definition, spring and depth of rib, and is very sound structured

-His pedigree shows calving ease, but with the Westcott influence on his maternal side, its safe to say he picked up the performance gene, and is recommended for use on cows to produce pounds

-He ranks in the top 2% of WW and YW, and boasts an actual 930lb weaning weight

-A real standout bull in the pen who many will find

# 31

TJSC BOONE PICKENS 46C

**SIRE:** MADER SON OF ANARCHY 144H  
LFE BS SHEILA 82A

HARVIE JDF WALLBANGERITIX

**DAM:** MADER OPAL 210B

CG BLACK OPAL 652S



MADER OPAL 210B



MATERNAL BROTHER OF LOT 31

## MADER ARCHER 188M

19 February 2024 • MDR 188M • BPTG1473613

**Homo Polled, Homo Black**

EPD	EPDs								Carcass EPDs				
	CE	BW	WW	YW	Milk	MCE	MWW	API	TI	CWT	REA	Fat	Marb
10.2	0.8	82.8	122.3	19.3	3.7	60.7	115.3	72.9	27.7	0.69	-0.09	-0.22	
Breed Rank	30	15	35	30	90	60	75	40	45	40	90	65	100

BW	205 Wt.	365 Wt.	ADG	WPDA
82	740	1342	3.52	3.69

**CE**  
☆☆☆

-A son out of the \$50,000 Son of Anarchy sire, and onto one of the best Opal daughters in the herd, who we have flushed several times

-Heifer bull option with an 82lb birthweight, and ranks in the top 15-30% for CE and BW Eps

-Look for added maternal strength in this bulls progeny, with udders and feet being at the forefront of his pedigree



# 32

HART INTERSTATE 102E

SIRE: KWA INTERSTATE 203J  
CROWE BUTTON 20E

LFE COMMISSIONER 811Z

DAM: MADER SHEILA 51D

LFE BS SHEILA 82A



MATERNAL SISTER OF LOT 32



MATERNAL SISTER OF LOT 32



## MADER KINGSTON 95M

13 January 2024 • MDR 95M • BPG1473339

Homo Polled, Homo Black

EPD	EPDs										Carcass EPDs		
	CE	BW	WW	YW	Milk	MCE	MWW	API	TI	CWT	REA	Fat	Marb
10.8	1.8	78.1	124.8	19.7	4.2	58.8	113.2	72.9	31.8	1.18	-0.08	-0.11	
Breed Rank	25	25	50	30	90	55	85	45	45	5	2	90	75

BW	205 Wt.	365 Wt.	ADG	WPDA
84	800	1360	4.02	3.64

CE



-Soft middled, stout topped, great width of base, and heavy muscle sum up this dude  
 -Backed by a superior Sheila 82A daughter, combining her elegance with LFE Commissioners power  
 -We are very impressed with what KWA Interstate has done for us, producing offspring with straight hair, added roundness to their muscle shape, extra twist, loads of width over that top, and very athletic skeletons  
 -A highlight bull here in the offering

# 33

HART INTERSTATE 102E

SIRE: KWA INTERSTATE 203J  
CROWE BUTTON 20E

BROOKING FIREBRAND 6068

DAM: MADER SHEILA 712H

MADER SHEILA 46E



BROOKING FIREBRAND



KWA INTERSTATE 203J



## MADER THUNDER CAT 78M

11 January 2024 • MDR 78M • BPRS1473333

Homo Polled, Homo Black

EPD	EPDs										Carcass EPDs		
	CE	BW	WW	YW	Milk	MCE	MWW	API	TI	CWT	REA	Fat	Marb
10.2	2.1	90.7	144.5	24.3	5.8	69.7	103.3	76.6	43.4	1.10	-0.05	-0.07	
Breed Rank	30	25	15	4	60	30	30	80	25	3	10	100	60

BW	205 Wt.	365 Wt.	ADG	WPDA
83	890	1431	3.93	3.85

CE



-A favorite  $\frac{3}{4}$  blood bull that offers adequate calving ease, along with great growth, weaning at 890lbs and having a very balanced set of EPDs  
 -The Firebrand cows are amongst our favorite in the herd, all with great feet and udders, extra extension and femininity, and pile of body mass  
 -This bull has lots of volume and capacity, is very fluid in his movement, and excels in skull design and muscle expression



# 34

HART INTERSTATE 102E

SIRE: KWA INTERSTATE 203J  
CROWE BUTTON 20E

MADER WALK THIS WAY 224B

DAM: MADER FLIRT 143J

RF CERTAINLY FLIRTIN 525C



MATERNAL BROTHER OF LOT 34



CERTAINLY FLIRTIN 525C

## MADER GHOSTRIDER 117M

16 January 2024 • MDR 117M • BPG1473352

Homo Polled, Homo Black

EPD	EPDs								Carcass EPDs				
	CE	BW	WW	YW	Milk	MCE	MWW	API	TI	CWT	REA	Fat	Marb
10.2	2.1	83.6	136.5	23.0	5.1	64.8	113.1	76.4	34.5	1.21	-0.08	-0.11	
Breed Rank	30	25	30	10	70	40	55	45	25	20	2	80	75

BW	205 Wt.	365 Wt.	ADG	WPDA
82	800	1374	3.85	3.62

CE



-Another son out of the \$23,000 KWA Interstate sire that was purchased as an outcross pedigree that adds body shape and muscle for us  
 -This bull resembles his sire very much with so much width of base and chest floor, carrying a lot of thickness and a muscular body type  
 -His dam is a great young cow out of Walk This Way and going back to the Certainly Flirtin cow family doubling up on maternal traits such as udder and foot quality

# 35

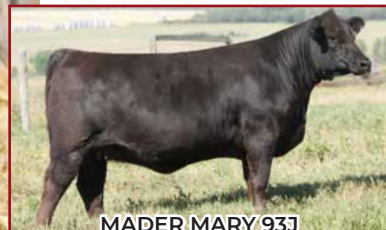
HART INTERSTATE 102E

SIRE: KWA INTERSTATE 203J  
CROWE BUTTON 20E

BGS/BM CAPTAIN SCREAM 63D

DAM: MADER MARY 93J

LFE BS MARY 113B



MADER MARY 93J



MATERNAL SISTER OF LOT 35

## MADER MAVERICK 36M

4 January 2024 • MDR 36M • BPG1473314

Homo Polled, Homo Black

EPD	EPDs								Carcass EPDs				
	CE	BW	WW	YW	Milk	MCE	MWW	API	TI	CWT	REA	Fat	Marb
10.3	2.4	82.8	126.9	19.9	5.8	61.3	111.8	74.3	34.0	1.17	-0.09	-0.13	
Breed Rank	30	30	35	25	90	30	75	50	35	20	2	70	80

BW	205 Wt.	365 Wt.	ADG	WPDA
82	820	1345	3.77	3.53

CE



-A bull that excels on both calving ease and growth  
 -His dam is real work horse, milking heavy and backed by the performance of Captain Scream and a beautiful Cobra donor, Mary 113B  
 -Much like his brothers, you will love his width from behind and over that top, he is good natured, and will add softness and body capacity to his offspring  
 -We love his maturity and masculinity, and he will be a front pasture bull moving forward



# 36

NCB COBRA 47Y

**SIRE:** MADER WALK THIS WAY 224B  
MADER P IRON SUGAR 7X

MADER SON OF ANARCHY 144H

**DAM:** MADER HONEY 13K  
MADER HONEY 67H



**BROTHER OF LOT 36**



**MADER SON OF ANARCHY**

## MADER RAZORS EDGE 43M

5 January 2024 • MDR 43M • BPG1473316

**Homo Polled, Hetero Black**

EPD	EPDs										Carcass EPDs		
	CE	BW	WW	YW	Milk	MCE	MWW	API	TI	CWT	REA	Fat	Marb
9.3	2.1	87.6	132.9	21.4	88.2	65.2	115.7	76.5	22.4	0.92	-0.09	-0.17	
Breed Rank	40	25	20	15	80	10	55	40	25	65	40	50	90

BW	205 Wt.	365 Wt.	ADG	WPDA
85	800	1420	4.10	3.59

**CE**  
☆☆

-Just an 85lb birthweight and an 800lb weaning weight out of a first calf heifer  
 -This bull reads very well to calve easy on bigger heifers or minimize birthweight on the cowherd  
 -He is awfully stout in real life, carrying a lot of lower stifle muscle, broad topped, and soft and hairy made  
 -Walk This Way semen is basically at the end of its inventory, and these sons will be the only access to his genetics moving forward

# 37

NCB COBRA 47Y

**SIRE:** MADER WALK THIS WAY 224B  
MADER P IRON SUGAR 7X

MADER PEARL HARBOUR 149F

**DAM:** MADER LACEY 138K  
MADER LACEY 24D



**MADER PEARL HARBOUR**



**MADER LACEY 24D**

## MADER STRIKE FIRST 52M

6 January 2024 • MDR 52M • BPG1473319

**Homo Polled, Hetero Black**

EPD	EPDs										Carcass EPDs		
	CE	BW	WW	YW	Milk	MCE	MWW	API	TI	CWT	REA	Fat	Marb
9.7	2.4	101.3	150.7	26.9	9.2	77.6	125.5	88.2	32.7	1.01	-0.09	-0.02	
Breed Rank	35	30	2	2	40	4	4	15	2	25	20	60	40

BW	205 Wt.	365 Wt.	ADG	WPDA
84	920	1432	3.52	3.74

**CE**  
☆☆

-Another real stout made rascal, with added hair, muscle and dimension  
 -His dam is hard to fault, so easy fleshing, great big foot under her, ideal udder suspension and teat size  
 -Another WTW son born with a low birthweight and converting well, weaning at 920lbs, and having a yearling of 1432lbs



# 38

NCB COBRA 47Y

**SIRE:** MADER WALK THIS WAY 224B  
MADER P IRON SUGAR 7X

MADER SON OF ANARCHY 144H

**DAM:** MADER OPAL 15K  
MADER OPAL 3H



CG BLACK OPAL 652S



MADER IRON SUGAR



## MADER FROST 103M

14 January 2024 • MDR 103M • BPG1473344

**Homo Polled, Homo Black**

EPD	EPDs								Carcass EPDs				
	CE	BW	WW	YW	Milk	MCE	MWW	API	TI	CWT	REA	Fat	Marb
10.4	2.1	94.7	148.6	20.8	8.0	68.2	129.6	85.3	32.1	0.90	-0.09	0.01	
Breed Rank	30	25	10	3	85	10	35	10	3	25	45	70	30

BW	205 Wt.	365 Wt.	ADG	WPDA
85	735	1313	3.65	3.34



-Lots of balance, style, and a great disposition on this prospect  
 -A bull we feel would work great in the heifer pen with his modest birthweight and balanced EPDs, but mostly his small skull, smooth shoulder, and light bone  
 -He combines 4 sires we repetitively use on heifers, Cobra, WTW, Son of Anarchy, and The National  
 -His dam was one of our favorite replacement heifers, and has turned into an ideal young cow that will make an impact for years to come

# 39

NCB COBRA 47Y

**SIRE:** MADER WALK THIS WAY 224B  
MADER P IRON SUGAR 7X

WS PROCLAMATION E202

**DAM:** MADER VIOLET 32K  
MADER VIOLET 49H



MADER WALK THIS WAY



MADER VIOLET 49H



## MADER RIPTIDE 17M

2 January 2024 • MDR 17M • BPG1473309

**Homo Polled, Homo Black**

EPD	EPDs								Carcass EPDs				
	CE	BW	WW	YW	Milk	MCE	MWW	API	TI	CWT	REA	Fat	Marb
8.5	1.0	87.2	135.5	23.1	6.5	66.7	133.9	85.1	22.8	0.76	-0.09	0.14	
Breed Rank	45	15	20	15	65	25	45	5	3	65	80	75	10

BW	205 Wt.	365 Wt.	ADG	WPDA
83	770	1294	3.52	3.39



-Sleep easy with this guy having been in your heifer pen this spring  
 -Low birthweight, very small headed, light bone column, and smooth throughout  
 -His dam is out of the great Violet 49H donor who offers added structural integrity, body mass, and characteristics such superior feet and udders  
 -A nice genetic combination here that will sire vigorous calves born unassisted



NCB COBRA 47Y

**SIRE:** MADER WALK THIS WAY 224B  
MADER P IRON SUGAR 7X

RF SHAKEDOWN 074H

**DAM:** MADER OPAL 31K

MADER OPAL 32C



## MADER ONYX 3M

**Homo Polled, Hetero Black**

1 January 2024 • MDR 3M • BPG1483014

EPD	EPDs							Carcass EPDs					
	CE	BW	WW	YW	Milk	MCE	MWW	API	TI	CWT	REA	Fat	Marb
9.8	1.0	89.4	131.5	23.4	7.2	68.1	126.9	83.1	25.1	0.80	-0.11	0.01	
Breed Rank	35	15	15	15	65	15	35	15	10	55	70	35	30

BW	205 Wt.	365 Wt.	ADG	WPDA
72	780	1219	3.03	3.14

- Another prime candidate for the heifer pen or to decrease birthweight and increase vigour
- Just a 72lb birthweight, yet still weaning off at 780lbs out of a first calver
- These Shakedown daughters a beautiful young females that are easy maintaining, milking on great balanced udders, and very functional cows
- He is super smooth made, very docile, light boned, and clean fronted

## Customer Feature



We run a 300 head commercial cow herd and have been using Mader bulls for about 20 years. The vast majority of our mainly black herd is made up of heifers that we kept out of Mader bulls. Because we use all of our own replacements, we need bulls that produce cows with good feet, good udders, and are just good producers. We also need performance bulls that put pounds on our calves, and we have no problem finding both at Maders. Longevity and temperament are also important factors. The longer the bull can breed, the more economical he becomes. Poor temperament won't last long here. That is something that we have never had an issue with. The Maders are a great family to work with and have become good friends over the years. Most of the people in the stands at their bull sale are there every year, and I believe it is because of not only the quality of bulls but also the people that produce them. The service is excellent, and there are no worries if there's ever an issue.

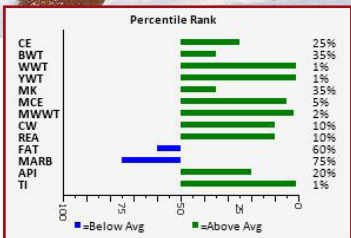
*Kevin Fletcher - Fletcher Land & Cattle*







# MADER **RUSTY CAGE** T1M



- This guy has been a standout since a young age, and has always showed dominant promise that he would continue to develop into a feature herdsire
- You combine WTL with Betts, and it is unreal the amount of lower muscle, loin, width and mass that this bull carries. He is super soft middled, and is extensive through that front third
- We campaigned this guy this past fall on the show road, and he was very competitive, with highlights such as being crowned Reserve Champion Simmental bull at Olds Fall Classic
- 83lb birthweight, weaned at 970lbs, ranks in the top 15% of breed for WW and YW
- You want to add stoutness and pounds to your offspring, come see Rusty Cage in person

1 January 2024 • MDR T1M • PG1473306

**Homo Polled, Red**

EPD	EPDs										Carcass EPDs		
	CE	BW	WW	YW	Milk	MCE	MWW	API	TI	CWT	REA	Fat	Marb
Breed Rank	10.8	2.5	105.3	154.6	27.8	8.8	80.5	123.3	88.5	38.5	1.10	-0.09	-0.11
	25	35	1	1	35	5	2	20	1	10	10	60	75
	BW	205	365	ADG	WPDA								
	83	970	1419	3.61	3.85								

MADER WALK THIS WAY 224B

SVS BETTS 808F

SIRE: MADER WALK THE LINE 92J

DAM: MADER JULIET 13H

IRCC DARLIN' 613D

MADER JULIET 210C







MADER **THRILLER** 120M



FULL SISTER TO LOT 42 - 44



LOT 42



DAM OF LOT 42 - 44 - WF CREAM SODA 64J

- Another bull we decided to campaign last fall on the show road, due to his early maturity and overall balance
- A stacked pedigree sired by the \$280,000 WTL sire, and backed by a fresh new donor to us, the \$25,000 WF Soda 64J
- We recently sold a full sister in FNL for \$21,000 to Downhill Simmentals, and a full brother was dominant all fall long for Wallgren Farms winning many titles
- A bull with added style, a nice hind leg, electric hair, and ample muscle and body capacity throughout
- These 3 full brothers will be easily found sale day

16 January 2024 • MDR 120M • PTG1473607

**Homo Polled, Red**

EPD	EPDs										Carcass EPDs		
	CE	BW	WW	YW	Milk	MCE	MWW	API	TI	CWT	REA	Fat	Marb
Breed Rank	7.8	3.8	108.6	160.5	23.2	3.8	77.5	117.4	90.3	43.4	1.11	-0.09	-0.02
Rank	55	55	1	1	65	60	4	35	1	3	5	55	40

BW	205 Wt.	365 Wt.	ADG	WPDA
85	960	1419	3.24	3.86



MADER WALK THIS WAY 224B  
 SIRE: MADER WALK THE LINE 92J  
 IRCC DARLIN' 613D

RF PATRIOT 762E  
 DAM: WF CREAM SODA 64J  
 RF CREAM SODA 520C



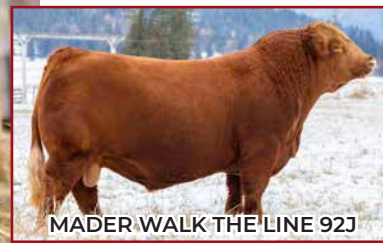
# 43

MADER WALK THIS WAY 224B

SIRE: MADER WALK THE LINE 92J  
IRCC DARLIN' 613D

RF PATRIOT 762E

DAM: WF CREAM SODA 64J  
RF CREAM SODA 520C



MADER WALK THE LINE 92J



FULL BROTHER OF LOT 42-44

## MADER DRIFT 58M

Homo Polled, Red

8 January 2024 • MDR 58M • PTC1473595

EPD	EPDs								Carcass EPDs				
	CE	BW	WW	YW	Milk	MCE	MWW	API	TI	CWT	REA	Fat	Marb
7.8	3.2	101.8	150.8	23.2	3.8	74.1	115.9	86.9	39.1	1.05	-0.09	-0.02	
Breed Rank	55	45	2	2	65	60	15	40	2	10	10	55	40

BW	205 Wt.	365 Wt.	ADG	WPDA
80	865	1401	3.81	3.70

CE  
☆☆

- Top 2% for WW and YW, and weans off at 865lbs
- Really like the extra middle this bull carries as he is so loose hided and deep in his rib
- The maternal strength runs deep in this lineage, with terrific udder quality, foot quality, and easy fleshing ability
- The temperament is second to none in all these full sibs, and the quality runs deep throughout them

# 44

MADER WALK THIS WAY 224B

SIRE: MADER WALK THE LINE 92J  
IRCC DARLIN' 613D

RF PATRIOT 762E

DAM: WF CREAM SODA 64J  
RF CREAM SODA 520C



FULL SISTER TO LOT 42 - 44

## MADER PHANTOM 63M

Homo Polled, Red

9 January 2024 • MDR 63M • PTC1473597

EPD	EPDs								Carcass EPDs				
	CE	BW	WW	YW	Milk	MCE	MWW	API	TI	CWT	REA	Fat	Marb
7.8	2.9	98.6	146.2	23.2	3.8	72.5	115.2	85.3	37.0	1.02	-0.09	-0.02	
Breed Rank	55	40	3	4	65	60	20	40	3	10	15	55	40

BW	205 Wt.	365 Wt.	ADG	WPDA
85	860	1353	3.52	3.60

CE  
☆☆

- The more masculine, stout topped brother, that is very capacious in his make-up
- This bull travels on a big foot and is very sound in his movement
- The dam is moderate in stature, but mighty in her body capacity and production, milking heavy, being very fertile, and is an ideal cow to analyze
- His steer calves should top the scales, and his daughters will be in hot demand for the replacement pen
- Check out his 85lb BW, and 860lb WW



FULL BROTHER OF LOT 42-44



# 45

MADER WALK THIS WAY 224B

SIRE: MADER WALK THE LINE 92J  
IRCC DARLIN' 613D

WFL BLINDLINE 28D

DAM: MADER SIERRA 142F

CROSSROAD SIERRA 524S



MATERNAL BROTHER OF LOT 45



MATERNAL BROTHER OF LOT 45

## MADER EMPEROR 30M

3 January 2024 • MDR 30M • PG1473313

Homo Polled, Red

EPD	EPDs										Carcass EPDs			
	CE	BW	WW	YW	Milk	MCE	MWW	API	TI	CWT	REA	Fat	Marb	
9.4	3.0	93.6	139.5	29.3	8.9	76.1	120.3	80.4	30.5	1.02	-0.9	-0.14		
Breed Rank	35	40	10	10	30	5	10	25	15	30	15	50	85	

BW	205 Wt.	365 Wt.	ADG	WPDA
89	865	1369	3.89	3.68

CE



-We love the mass, rib shape, stoutness, and overall substance to this guy  
 -He has a big foot, is heavy haired, masculine in his design, and expresses lots of muscle shape  
 -This is the fourth top bull this cow has put in the sale over the past five years, all of which have been highlights, including last years son selling to Rob Tindal for \$10,500  
 -The maternal strength in this lineage adds extra milk and power, and this young stud should do just that

# 46

MADER WALK THIS WAY 224B

SIRE: MADER WALK THE LINE 92J  
IRCC DARLIN' 613D

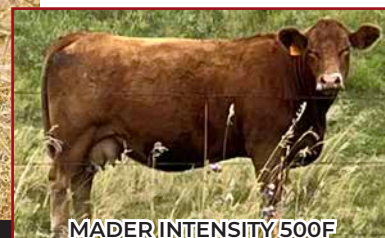
WFL DOWNTOWN 26D

DAM: MADER INTENSITY 500F

MADER P INTENSITY 79W



MATERNAL BROTHER OF LOT 46



MADER INTENSITY 500F

## MADER TITAN 6M

1 January 2024 • MDR 6M • PG1473305

Homo Polled, Red

EPD	EPDs										Carcass EPDs			
	CE	BW	WW	YW	Milk	MCE	MWW	API	TI	CWT	REA	Fat	Marb	
8.1	4.4	104.3	151.1	32.5	6.4	84.7	116.42	85.0	40.1	1.09	-0.10	-0.13		
Breed Rank	50	70	1	2	20	25	1	35	4	10	10	45	80	

BW	205 Wt.	365 Wt.	ADG	WPDA
82	850	1421	4.22	3.73

CE



-A big scaled meat wagon here that expresses loads of muscle and mass throughout  
 -These Walk The Line sons all have a stamp, their growthy, their stout, and they are very sound on their feet and legs  
 -His dam is big powerful cow who milks heavy, is ideal footed, and has a real balanced and level udder  
 -He has an actual weaning weight of 850lbs coming off the cow, and 1-2% for WW, YW, MWWT



# 47

MADER WALK THIS WAY 224B

SIRE: MADER WALK THE LINE 92J  
IRCC DARLIN' 613D

HIDDEN H SWEET MEAT

DAM: FGAF DUSTY ROSE 117D  
LRX DUSTY ROSE 56Z



FGAF DUSTY ROSE 117D



MATERNAL BROTHER OF LOT 47

## MADER GOLIATH 50M

6 January 2024 • MDR 50M • PG1473317

Homo Polled, Red

EPD	EPDs								Carcass EPDs				
	CE	BW	WW	YW	Milk	MCE	MWW	API	TI	CWT	REA	Fat	Marb
8.8	3.8	103.7	151.5	24.6	7.0	76.5	117.6	87.6	36.3	1.04	-0.09	-0.02	
Breed Rank	45	55	1	2	55	20	10	30	2	15	15	55	40

EPD	BW	205 Wt.	365 Wt.	ADG	WPDA
	92	910	1396	3.77	3.80

CE



-Weaning off the cow at 910lbs ranks this bull as one of the bigger scaled, high performance bulls that will offer extra pounds to his progeny  
 -The 117D female is pretty flawless, feminine, big bodied, excellent udder suspension, and very balanced and complete  
 -He has added length and frame, is masculine and mature, and really offers a lot of width and mass  
 -Utilize this bull to sell some of the heavy calves come fall

# 48

MADER WALK THIS WAY 224B

SIRE: MADER WALK THE LINE 92J  
IRCC DARLIN' 613D

ERIXON REVELSTOCK 41A

DAM: TRI-R MS DREAMY 23D  
TRI-R MS CHARLOTTE 15Z



MATERNAL SISTER OF LOT 48



TRI-R MS DREAMY 23D

## MADER STORM CHASER 71M

10 January 2024 • MDR 71M • PG1473330

Homo Polled, Red

EPD	EPDs								Carcass EPDs				
	CE	BW	WW	YW	Milk	MCE	MWW	API	TI	CWT	REA	Fat	Marb
8.2	4.3	93.7	142.1	27.4	7.8	74.3	108.7	78.8	36.6	0.95	-0.11	-0.12	
Breed Rank	50	65	10	10	40	10	15	60	15	15	30	35	80

EPD	BW	205 Wt.	365 Wt.	ADG	WPDA
	92	830	1365	3.93	3.67

CE



-His full sister just recently calved, and we are very impressed with her udder quality, body condition, and mothering ability  
 -Much like his brother above, this bull comes to you with added frame and length, and his calves should really weigh up  
 -The Walk the Line sons all rank within the top percentile for WW and YW, and you will note their actual weaning weights top the charts  
 -Momma is huge ribbed, has problem free feet and a very balanced udder design



# 49

MADER WALK THIS WAY 224B

**SIRE:** MADER WALK THE LINE 92J  
IRCC DARLIN' 613D

MRL GAME CHANGER 12A

**DAM:** MADER TWINKLE 58C  
CROSSROAD TWINKLE 594T



MATERNAL SISTER OF LOT 49



MATERNAL BROTHER OF LOT 49

## MADER **GOLDRUSH** 57M

8 January 2024 • MDR 57M • PG1496901

**Homo Polled, Red**

EPD	EPDs							Carcass EPDs					
	CE	BW	WW	YW	Milk	MCE	MWW	API	TI	CWT	REA	Fat	Marb
10.6	1.7	91.6	136.0	26.1	8.2	71.8				32.0	0.99	-0.9	-0.03
Breed Rank	25	20	10	10	45	10	20			25	25	50	45

BW	205 Wt.	365 Wt.	ADG	WPDA
84	880	1369	3.69	3.70

**CE**  
☆☆

-A pen favorite here, with his dark red color, his angularity, his added muscle definition, and his overall functional skeleton

-A full sister was recently a feature in our Ladies Night sale, selling for \$16,000 to Downhill and TSN Simmentals

-Twinkle 58C has a long list of matron cows in her lineage, and the Twinkle cow family is responsible for numerous high sellers for us

-He starts at a modest 84lbs, and explodes into an actual weaning weight of 880lbs

# 50

MADER WALK THIS WAY 224B

**SIRE:** MADER WALK THE LINE 92J  
IRCC DARLIN' 613D

WFL BLINDLINE 28D

**DAM:** MADER OPAL 545F  
MADER OPAL 72D



FULL BROTHER OF LOT 50



MATERNAL BROTHER OF LOT 50

## MADER **COBALT** 126M

19 January 2024 • MDR 126M • PG1473356

**Homo Polled, Red**

EPD	EPDs							Carcass EPDs					
	CE	BW	WW	YW	Milk	MCE	MWW	API	TI	CWT	REA	Fat	Marb
7.7	3.9	106.9	156.8	27.3	5.2	80.8	119.5	87.1	40.4	1.12	-0.10	-0.12	
Breed Rank	55	60	1	1	40	40	2	25	2	10	4	45	80

BW	205 Wt.	365 Wt.	ADG	WPDA
92	950	1369	3.11	3.82

**CE**  
☆☆

-A full brother last year was a sale feature selling to Murphy Farming for \$13,000

-A big weaning weight of 950lbs, and a bull that offers extra length, style, and thickness

-His dam just recently calved again, with nice little teets and a nice tight udder, she milks heavy and brings in a big one year after year

-He incorporates the Opal cow family on the bottom side of his pedigree adding more maternal greatness



# 51

MADER WALK THIS WAY 224B

SIRE: MADER WALK THE LINE 923  
IRCC DARLIN' 613D

SVS BETTS 808F

DAM: MADER COVER GIRL 2H  
MADER COVER GIRL 130Z



MATERNAL SISTER OF LOT 51



SVS BETTS 808F

## MADER MIDAS 51M

Homo Polled, Red

6 January 2024 • MDR 51M • PGI473318

EPD	EPDs								Carcass EPDs				
	CE	BW	WW	YW	Milk	MCE	MWW	API	TI	CWT	REA	Fat	Marb
9.4	2.5	92.2	136.7	20.6	6.9	66.7	117.8	80.1	30.3	0.87	-0.09	-0.09	
Breed Rank	35	35	10	10	85	20	45	30	15	30	55	65	70

BW	205 Wt.	365 Wt.	ADG	WPDA
86	800	1313	3.77	3.49



-His Betts dam is one of our favorite cows on the farm and gets spotted by many that stop in, as she is feminine, huge barrelled, has a perfect udder, and really likes to show off  
 -He is heavy haired, has extra depth and spring of rib, and super quiet to be around  
 -The combination of the \$280,000 WTL and the \$120,000 Betts, offers double the muscle, and double the softness and style

# 52

MADER WALK THIS WAY 224B

SIRE: MADER WALK THE LINE 923  
IRCC DARLIN' 613D

MADER P BLK RANSOM 23U

DAM: MADER COVER GIRL 130Z  
JHSN BLK COVER 426U



MATERNAL BROTHER OF LOT 52



MATERNAL BROTHER OF LOT 52

## MADER MOSAIC 54M

Homo Polled, Red

7 January 2024 • MDR 54M • PGI473320

EPD	EPDs								Carcass EPDs				
	CE	BW	WW	YW	Milk	MCE	MWW	API	TI	CWT	REA	Fat	Marb
10.2	1.5	79.9	118.7	21.3	7.3	61.3	119.75	75.6	22.5	0.72	-0.09	-0.02	
Breed Rank	30	20	45	40	80	15	75	25	30	65	85	65	40

BW	205 Wt.	365 Wt.	ADG	WPDA
86	730	1210	3.52	3.22



-A modest, moderate framed bull that carries adequate thickness and muscle on a sound structure  
 -His 13 year old dam has been a weapon around here over her life span, always bringing in one of the top calves. Her age has caught up to her a bit, and we can tell she didn't milk as heavy this past year  
 -We really do feel this is one of those bulls that will only get better with age, and he will continue to develop into a front pasture herdsire  
 -A modest BW of 86lbs, and is smooth made





MADER **COMMAND** 104M

14 January 2024 • MDR 104M • PTG1473345

**Homo Polled, Red**

EPD	EPDs										Carcass EPDs		
	CE	BW	WW	YW	Milk	MCE	MWW	API	TI	CWT	REA	Fat	Marb
7.9	3.1	89.4	137.0	23.0	5.0	67.7	108.9	77.6	27.6	1.05	-0.10	-0.12	
Breed Rank	55	45	15	10	70	45	40	60	20	45	10	45	80

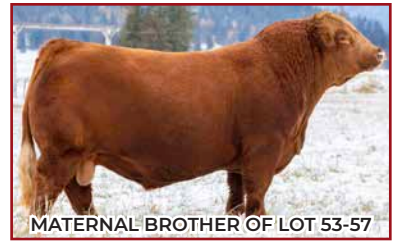
BW	205 Wt.	365 Wt.	ADG	WPDA
83	820			

**CE**  
☆☆☆

R PLUS YUMA 9087G  
**SIRE:** R PLUS MANDATE 1044J  
 MISS R PLUS 4193B  
 MR HOC BROKER  
**DAM:** IRCC DARLIN' 613D  
 DESTINY ODIN SHEA



MATERNAL SISTER OF LOT 53-57



MATERNAL BROTHER OF LOT 53-57



MADER **DIRECTIVE** 79M

11 January 2024 • MDR 79M • PTG1473334

**Homo Polled, Red**

EPD	EPDs										Carcass EPDs		
	CE	BW	WW	YW	Milk	MCE	MWW	API	TI	CWT	REA	Fat	Marb
7.9	2.6	83.6	128.8	23.0	5.0	64.8	107.6	74.8	23.5	0.99	-0.10	-0.12	
Breed Rank	55	35	30	20	70	45	55	655	35	60	20	45	80

BW	205 Wt.	365 Wt.	ADG	WPDA
84	740	1248	3.69	3.34

**CE**  
☆☆☆

-Two full flushmates off of the prolific Darlin 613D donor female, who is also the dam of the \$280,000 Walk the Line sire  
 -Sired by Mandate who offers a unique twist in pedigree to the red gene pool, and also offers progeny that are heavy haired, smooth made, and sound

-Lot 53 has an actual weight of 820lbs off a first calf recip, and we really admire the added frame and stretch in him, a bull that gets better by the day, and is very functional on the move

-Lot 54 is the more moderate framed bull expressing a lot of middle third, is attractive in his front end, and really gets out and travels. He is very smooth shouldered and small headed, and I wouldn't hesitate to utilize this bull in the heifer pen





MATERNAL BROTHER OF LOT 53-57



MATERNAL SISTER OF LOT 53-57



MADER **ALLIANCE** 130M

20 January 2024 • MDR 130M • PTG1473608

**Homo Polled, Red**

EPD	EPDs										Carcass EPDs		
	CE	BW	WW	YW	Milk	MCE	MWW	API	TI	CWT	REA	Fat	Marb
9.3	1.6	80.5	119.3	25.2	6.0	65.5	119.9	77.2	6.9	0.67	-0.09	0.01	
Breed Rank	40	20	40	40	50	30	50	25	25	100	95	70	30

BW	205 Wt.	365 Wt.	ADG	WPDA
84	715	1242	3.65	3.34



SIRE: SVS BOND 973G  
 CMS SODA POP 410B  
 MR HOC BROKER  
 DAM: IRCC DARLIN' 613D  
 DESTINY ODIN SHEA

-Two descendants out of the \$45,000 Darlin 613D donor, that offers maternal characteristics such as an unreal udder, beautiful feet and legs, and a real elegant design in her progeny  
 -This cow has easily produced over \$600,000 in progeny in her short career, and she is still a dominant force in our embryo program. We unfortunately lost the cow though, so take advantage on getting one of her sought after sons bought

-Lot 55 would be a real calving ease type of prospect. Just an 84lb BW and a real balanced set of EPDs including ranking in the top 20-40% for CE and BW. He is small skulled, light boned, and smooth

-Lot 56 would be a performance bull. You will note more BW in this bull, but with the invitro embryos, we often see them going at least a week overdue, adding pounds at the tail end. He is super long, dark red, powerfully constructed, and has that great blaze he should pass on



MADER **FINAL LIMIT** 108M

14 January 2024 • MDR 108M • PTG1473605

**Homo Polled, Red**

R PLUS YUMA 9087G

SIRE: RF NO LIMITS 1112J  
 RUST MISS 6217D

EPD	EPDs										Carcass EPDs		
	CE	BW	WW	YW	Milk	MCE	MWW	API	TI	CWT	REA	Fat	Marb
6.5	4.0	102.0	150.6	26.3	3.5	77.3	114.5	87.9	38.4	1.09	-0.08	0.06	
Breed Rank	70	60	2	2	45	65	5	40	2	10	10	85	20

BW	205 Wt.	365 Wt.	ADG	WPDA
105	965	1346	2.99	3.77



MR HOC BROKER  
 DAM: IRCC DARLIN' 613D  
 DESTINY ODIN SHEA





MADER **SPEED LIMIT** 176M



FULL BROTHER TO LOT 57



DAM - IRCC DARLIN 613D



FULL SISTER TO LOT 57



FULL BROTHER TO LOT 57



SIRE - RF NO LIMITS 1112J

-A standout bull from a young age, with his dark cherry red color, his added style and dimension, and his overall completeness  
 -We recently sold a full sister at Friday Night Lights for \$12,000 to LA Ranch, and you will note many full and half brothers throughout the catalogue  
 -He boasts a 900lb actual weaning weight, and ranks in the top 1-3% for WW, YW, and MWWT  
 -He is moderate in stature, backed by the matron Darlin 613D female, and should continue to progress into a great young herdsire

13 February 2024 • MDR 176M • PTG1473611

**Homo Polled, Red**

EPD	EPDs								Carcass EPDs				
	CE	BW	WW	YW	Milk	MCE	MWW	API	TI	CWT	REA	Fat	Marb
Breed Rank	6.5	4.4	106.2	156.5	26.3	3.5	79.4	115.4	89.9	42.5	1.14	-0.08	0.06
Rank	70	70	1	1	45	65	3	40	1	4	3	85	20

BW	205 Wt.	365 Wt.	ADG	WPDA
98	900	1375	2.87	3.87



R PLUS YUMA 9087G

MR HOC BROKER

SIRE: RF NO LIMITS 1112J

DAM: IRCC DARLIN' 613D

RUST MISS 6217D

DESTINY ODIN SHEA



# 58

R PLUS VENOM 4006B

**SIRE:** R PLUS REDDINGTON 0143H  
MISS R PLUS 6168D

MRL BLACK TOP 127A

**DAM:** MRL MISS 8465F

MRL MISS 5310C



RPLUS REDDINGTON 0143H



MRL MISS 8465F



## MADER FUSION 114M

16 January 2024 • MDR 114M • PTC1473603

**Homo Polled, Red**

EPD	EPDs								Carcass EPDs				
	CE	BW	WW	YW	Milk	MCE	MWW	API	TI	CWT	REA	Fat	Marb
7.9	3.4	72.3	107.4	25.8	3.4	62.0	109.9	68.4	18.8	0.73	-0.10	-0.05	
Breed Rank	55	50	75	70	50	65	70	55	75	80	85	40	50

BW	205 Wt.	365 Wt.	ADG	WPDA
89	785	1322	3.81	3.56

**CE**  
☆☆

-A dark cherry red bull that is the result of some purchased embryos  
 -Sired by the \$160,000 R Plus Reddington, and back by a tremendous MRL female  
 -A smooth made bull that offers a balanced set of EPDs, is complete in his make up, and really travels with ease  
 -An outcross pedigree to any of our genetics that would make a great cross onto many of our clients herds

# 59

LFE VEGAS 3145A

**SIRE:** DMF CAPITAL GAINS 828F  
DMF MS TUCKER 112Y

SVS BETTS 808F

**DAM:** MADER SIERRA 707H

MADER SIERRA 64C



DMF CAPITAL GAINS 828F



SVS BETTS 808F



## MADER WARRANT 147M

27 January 2024 • MDR 147M • PG1473365

**Homo Polled, Red**

EPD	EPDs								Carcass EPDs				
	CE	BW	WW	YW	Milk	MCE	MWW	API	TI	CWT	REA	Fat	Marb
8.3	3.8	77.7	115.5	23.9	6.7	62.8	105.4	67.9	24.9	0.98	-0.09	-0.19	
Breed Rank	50	55	55	50	60	20	65	75	75	55	25	50	95

BW	205 Wt.	365 Wt.	ADG	WPDA
84	770	1319	3.61	3.56

**CE**  
☆☆

-An attractive blaze face bull here, that expresses good mobility, a wide top and round muscle shape, and is very thick throughout his body type  
 -His dam is a big strong cow, with great teat size and udder quality, a big dark foot, and loads of body capacity  
 -His maternal sister just recently sold in our female sale to Tandem T Farms for \$9000  
 -He will leave the money stripe on his progeny, and offer added length and frame



# 60

KWA LAW MAKER 59C

**SIRE:** WRC GREAT GATSBY 3321 ET  
WRC CERTAINLY FLIRTIN 18E

MADER LIEUTENANT 50E

**DAM:** MADER CANDACE 19G  
MADER CANDACE 303D



MADER CANDACE 19G



MATERNAL SISTER OF LOT 60



## MADER AUTHORITY 144M

24 January 2024 • MDR 144M • PG1473363

Homo Polled, Red

EPD	EPDs										Carcass EPDs		
	CE	BW	WW	YW	Milk	MCE	MWW	API	TI	CWT	REA	Fat	Marb
7.5	4.3	93.0	143.1	23.2	2.7	69.7	114.3	79.5	41.4	1.00	-0.06	-0.04	
Breed Rank	60	65	10	5	65	75	30	45	15	5	20	95	50

BW	205 Wt.	365 Wt.	ADG	WPDA
92	860	1343	3.36	3.70

CE  
☆☆

-A pen favorite offering so much depth of body, heartgirth, and mass over that top  
 -He is attractive is his front third, dark red in his color, is masculine and bold in his makeup  
 -His dam is a dark cherry red female with a big dark foot, level udder suspension, and carries loads of volume  
 -The Gatsby bull was purchased as an outcross sire to us, offering multiple great cow families, along with some superior proven herdsires in his pedigree  
 -This guy will add extra middle and softness to his progeny that will weigh up on the scales

# 61

KWA LAW MAKER 59C

**SIRE:** WRC GREAT GATSBY 3321 ET  
WRC CERTAINLY FLIRTIN 18E

SVS BETTS 808F

**DAM:** MADER COVER GIRL 35J  
MADER COVER GIRL 130Z



MATERNAL SISTER OF LOT 61



WRC GREAT GATSBY



## MADER UNSTOPPABLE 184M

16 February 2024 • MDR 184M • PG1473381

Homo Polled, Red

EPD	EPDs										Carcass EPDs		
	CE	BW	WW	YW	Milk	MCE	MWW	API	TI	CWT	REA	Fat	Marb
7.6	4.9	79.5	125.8	19.7	3.6	59.5	108.2	69.4	31.5	0.76	-0.06	-0.08	
Breed Rank	55	80	45	25	90	65	85	65	70	25	80	95	65

BW	205 Wt.	365 Wt.	ADG	WPDA
96	700	1252	3.11	3.38

CE  
☆☆

-Just a middle of February bull here that types very nice on a moderate frame  
 -This bull is very well put together, and with time, will continue to grow out and scale up to be a very nice looking herdsire  
 -The combination of Lawmaker, Captain Morgan, and Betts, make this young prospect a genetic dream adding in style, thickness, muscle, and performance



# 62

KWA LAW MAKER 59C

SIRE: WRC GREAT GATSBY 3321 ET  
WRC CERTAINLY FLIRTIN 18E

WFL WESTCOTT 24C

DAM: MADER MALIBU 98F  
MADER P MALIBU 40W



MATERNAL BROTHER OF LOT 62



WFL WESTCOTT 24C

## MADER DOMINANCE 136M

21 January 2024 • MDR 136M • PG1473360

Homo Polled, Red

EPD	EPDs										Carcass EPDs		
	CE	BW	WW	YW	Milk	MCE	MWW	API	TI	CWT	REA	Fat	Marb
7.2	4.2	83.4	128.6	20.2	0.7	61.9	106.8	71.9	40.6	1.00	-0.06	-0.10	
Breed Rank	60	65	30	20	85	95	70	70	50	10	20	100	70

BW	205 Wt.	365 Wt.	ADG	WPDA
91	790	1243	3.20	3.41

CE  
☆☆

-Another dark red Gatsby son that is heavy haired, straight in his lines, and very proportionately built  
 -His dam is a big capacious female that milks heavy and adds performance and weight to all of her progeny  
 -This bull travels on a great set of feet and legs, and will add length and frame to his offspring, resulting in more pounds

# 63

KWA LAW MAKER 59C

SIRE: WRC GREAT GATSBY 3321 ET  
WRC CERTAINLY FLIRTIN 18E

SVS TYCOON 841F

DAM: DEEG MS HAYLEY 18H  
DEEG MS HAYLEY 68C



MATERNAL BROTHER OF LOT 63



DEEG MS HAYLEY 18H

## MADER STRONG HOLD 89M

12 January 2024 • MDR 89M • PG1473336

Homo Polled, Red

EPD	EPDs										Carcass EPDs		
	CE	BW	WW	YW	Milk	MCE	MWW	API	TI	CWT	REA	Fat	Marb
7.3	4.4	89.9	133.9	25.2	4.3	70.2	107.7	76.6	35.4	0.88	-0.07	-0.08	
Breed Rank	60	70	15	15	50	55	25	65	25	15	50	90	65

BW	205 Wt.	365 Wt.	ADG	WPDA
78	775	1238	3.24	3.30

CE  
☆☆

-A maternal brother was a lead off bull last year selling for \$17,500 to Sawley Ranches  
 -The dam is an ideal Tycoon daughter with great udder suspension, is bold in her body type, and dark red in color  
 -This bull comes on a smaller frame, is real smooth through the shoulder and small in the head, still while maintaining adequate muscle and depth of rib



# 64

KWA LAW MAKER 59C

SIRE: WRC GREAT GATSBY 3321 ET  
WRC CERTAINLY FLIRTIN 18E

SVS TYCOON 841F

DAM: TODD JANELLE 7J  
DONOVANDALE DANCE FOR JOY



TODD JANELLE 7J



SVS TYCOON



## MADER TOP FORCE 153M

1 February 2024 • MDR 153M • PG1473366

Homo Polled, Red

EPD	EPDs										Carcass EPDs		
	CE	BW	WW	YW	Milk	MCE	MWW	API	TI	CWT	REA	Fat	Marb
9.1	2.7	81.3	128.9	24.1	4.4	64.8	107.9	72.7	33.7	0.90	-0.07	-0.14	
Breed Rank	40	35	40	20	60	50	55	65	45	20	45	90	85

EPD	BW	205 Wt.	365 Wt.	ADG	WPDA
	83	720	1345	3.85	3.55

CE  
☆☆☆

-A smooth made bull with lighter bone and a small head, just an 83lb BW, and could easily be used on heifers or young cows to increase calving ease  
-This bull is very sound on the move, has lots of body capacity and rib shape, and has that ideal blaze face  
-His dam was purchased as a high seller out of Ontario, and has really turned out to be a nice looking, modest young female with the right tools for production

# 65

MAR MAC UTAH WHISKY 52E

SIRE: WLB TOP TIER 456G  
WLB 47Y FAE 343E

SVS DYNASTY 915G

DAM: MADER TRANCE 820J  
MADER TRANCE 58F



WLB TOP TIER



SVS DYNASTY



## MADER TOP GUN 101M

13 January 2024 • MDR 101M • PG1473343

Homo Polled, Red

EPD	EPDs										Carcass EPDs		
	CE	BW	WW	YW	Milk	MCE	MWW	API	TI	CWT	REA	Fat	Marb
12.2	2.1	77.3	103.4	23.1	6.4	61.8	112.3	71.8	17.2	0.89	-0.09	-0.09	
Breed Rank	15	25	55	75	65	25	70	50	60	85	45	75	70

EPD	BW	205 Wt.	365 Wt.	ADG	WPDA
	84	725	1240	3.48	3.25

CE  
☆☆☆

-Heifer bull candidate here with an 84lb BW, ranks in the top 15% for CE and top 25% for BW  
-Raised on a first calf heifer himself, he shows a light bone column, a very smooth shoulder, and nice small skull  
-Dark red in color, has a great blaze face, and should calve well like his Top Tier sire who we have used for two years on heifers



# 66

MAR MAC UTAH WHISKY 52E

SIRE: WLB TOP TIER 456G  
WLB 47Y FAE 343E

SVS RANCHER 42H

DAM: DK MACKFRID 24K  
IPU MS. REDSKIN 35Z



## MADER **TOP STRIKE** 145M

25 January 2024 • MDR 145M • PG1473364

**Homo Polled, Red**

EPD	EPDs								Carcass EPDs				
	CE	BW	WW	YW	Milk	MCE	MWW	API	TI	CWT	REA	Fat	Marb
12.0	3.7	87.4	116.3	26.5	6.2	70.2	118.4	77.2	17.1	0.88	-0.09	-0.05	
Breed Rank	15	55	20	45	45	25	25	30	25	85	50	55	50

BW	205 Wt.	365 Wt.	ADG	WPDA
99	765	1398	3.81	3.60

**CE**



-We purchased this guy's dam for \$17,000 out of the Friday Night Lights sale  
 -Although he has bigger BW, we feel this bull should offer a fair amount of calving ease, ranking in the top 15% for CE, and being small headed and very smooth shouldered  
 -I think his larger birthweight can be accounted for by being overdue at birth, and his dam seeing extra feed prior to calving  
 -A very well put together individual that shows a lot of style, balance, and functionality

## Customer Feature



We run a 1400 cow/ calf pair operation, backgrounding all of our own calves in Youngstown, AB. When we set out to find a reputable bull breeder over 10 yrs ago we were thrilled to come across the Mader family and their herd of bulls. We found Maders bulls checked all the boxes. Functionality, rate of gain and eye appeal to mention just a few. For these reasons we have been regulars at Mader's sale barn and have been very happy with our purchases over the years. Whether it's their influence on our steers going through the sale ring or our mother cows out in the pasture.

*Steven Bignell - Bignell Cattle Co.*





# 67

R PLUS YUMA 9087G

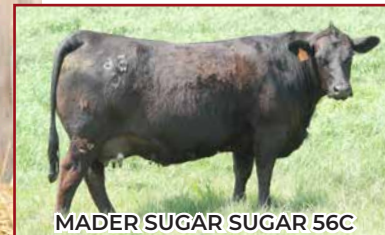
SIRE: R PLUS MANDATE 1044J

MISS R PLUS 4193B

FBFI COMBUSTIBLE

DAM: MADER SUGAR SUGAR 56C

MADER P IRON SUGAR 7X



MADER SUGAR SUGAR 56C



MATERNAL BROTHER OF LOT 67

## MADER NEW ORDER 310L

8 June 2023 • MDR 310L • BPG1464941

Homo Polled, Homo Black

EPD	EPDs							Carcass EPDs				CE	
	CE	BW	WW	YW	Milk	MCE	MWW	API	TI	CWT	REA		Fat
9.4	3.8	92.9	144.0	20.8	6.4	67.3	113.8	77.6	32.6	1.10	-0.9	-0.18	
Breed Rank	35	55	10	5	85	25	40	45	20	25	10	50	95

BW	205 Wt.	Jan 10 Wt.	WPDA
80	800	1780	2.99

-Big rugged bull here showing lots of power, width of top and chest floor, and carries lots of heavy muscle  
 -These Mandate sons have matured into great looking herdsires, and he is backed by a favorite Ironsugar daughter who cranks a good one every year  
 -Look for added milk and production on his daughters, and added pounds on his steer calves  
 -Super quiet disposition, and easy to be around

# 68

R PLUS YUMA 9087G

SIRE: R PLUS MANDATE 1044J

MISS R PLUS 4193B

MADER WALK THIS WAY 224B

DAM: MADER TRANCE 58F

MADER TRANCE 242C



MATERNAL BROTHER OF LOT 68



MATERNAL BROTHER OF LOT 68

## MADER JUDGE RULING 332L

21 June 2023 • MDR 332L • BPG1464950

Homo Polled, Homo Black

EPD	EPDs							Carcass EPDs				CE	
	CE	BW	WW	YW	Milk	MCE	MWW	API	TI	CWT	REA		Fat
7.8	3.1	88.9	136.8	20.8	6.6	65.3	115.0	77.5	30.5	1.07	-0.10	-0.11	
Breed Rank	55	45	15	10	85	20	50	40	20	30	10	40	75

BW	205 Wt.	Jan 10 Wt.	WPDA
86	742	1600	2.72

-A big strong bull that has added frame and body substance  
 -A nice blaze face like his momma, and he carries the heavy haircoat, added length of spine, and foot quality that we see from the Mandate offspring  
 -Mandate is a past \$160,000 sire, who is really leaving his mark in the industry as both a calving ease sire, along with a bull that offers a lot of thickness and muscle in his calves  
 -This guy would be a bit more standoffish when singled out, but is problem free in the group



# 69

R PLUS YUMA 9087G

SIRE: R PLUS MANDATE 1044J

MISS R PLUS 4193B

LFE HEAVY HITTER 352C

DAM: MADER OPAL 91F

MADER OPAL 28C



MATERNAL BROTHER OF LOT 69



MATERNAL SISTER OF LOT 69

## MADER IMPERATIVE 334L

21 June 2023 • MDR 334L • BPG1464951

Homo Polled, Homo Black Test Pending

EPD	EPDs										Carcass EPDs		
	CE	BW	WW	YW	Milk	MCE	MWW	API	TI	CWT	REA	Fat	Marb
7.4	3.8	89.5	138.0	19.0	3.6	63.8	105.1	74.7	38.9	1.02	-0.10	-0.18	
Breed Rank	60	55	15	10	95	65	60	75	35	10	15	45	95

BW	205 Wt.	Jan 10 Wt.	WPDA
82	752	1540	2.64

CE



- A very high quality bull here that expresses a wide pin set, lots of lower stifle, and a ton of rib shape and style
- He ranks well for performance being in the top 10-15% for YW and WW and ranking in the top end for weaning weight out of the summer program
- Backed by a real nice Opal female that milks heavy and holds her body condition very well all year round
- A herdsire that should add eye appeal and mass to his offspring

# 70

TJSC BOONE PICKENS 46C

SIRE: MADER SON OF ANARCHY 144H

LFE BS SHEILA 82A

BROOKING BANK NOTE 4040

DAM: MADER ENVY 13E

WHEATLAND ENVY 281Z



MATERNAL BROTHER OF LOT 70



MATERNAL BROTHER OF LOT 70

## MADER TIEBREAKER 343L

26 June 2023 • MDR 343L • BPG1473292

Homo Polled, Homo Black

EPD	EPDs										Carcass EPDs		
	CE	BW	WW	YW	Milk	MCE	MWW	API	TI	CWT	REA	Fat	Marb
-	-	-	-	-	-	-	-	-	-	-	-	-	-
Breed Rank	-	-	-	-	-	-	-	-	-	-	-	-	-

BW	205 Wt.	365 Wt.	WPDA
77	676	1460	2.59

CE



- A 3/4 blood bull that is small headed, smooth shouldered, light boned son of the calving ease Son of Anarchy sire
- He is backed by a beautiful uddered, easy maintaining, Firebrand female, that also offers calving ease to this sire
- He shows a great muscle pattern, is stout and wide through that loin and top, and will add some color to his calf crop
- EPD's will be available soon



# 71

TJSC BOONE PICKENS 46C

**SIRE:** MADER SON OF ANARCHY 144H  
LFE BS SHEILA 82A

LFE THE RIDDLER 323B

**DAM:** MADER BLACKGOLD 510F  
MADER BLACKGOLD 8B



MATERNAL BROTHER OF LOT 71



MATERNAL BROTHER OF LOT 71

## MADER **FREEDOM** 352L

29 June 2023 • MDR 352L • BPG1464960

**Homo Polled, Homo Black**

EPD	EPDs										Carcass EPDs		
	CE	BW	WW	YW	Milk	MCE	MWW	API	TI	CWT	REA	Fat	Marb
6.9	3.9	93.7	141.3	21.1	3.7	68.0	117.4	79.4	24.6	0.90	-0.08	-0.08	
Breed Rank	65	60	10	10	80	60	40	35	15	55	45	85	65

CE	BW	205 Wt.	Jan 10 Wt.	WPDA
87	780	1690	2.94	

**CE**



-A maternal brother was a highlight last year selling to Westman Farms and JK Bar for \$16,500  
 -This is a big strong bull, that is very good in his lines, masculine and massive in his body type, and carries an abundance of muscling and thickness  
 -His Riddler dam has been very successful in production, milking heavy, and weaning off one of the heaviest calves in the summer program every year  
 -Super docile to handle

# 72

TJSC BOONE PICKENS 46C

**SIRE:** MADER SON OF ANARCHY 144H  
LFE BS SHEILA 82A

LFE HEAVY HITTER 352C

**DAM:** MADER SUGAR 96G  
MADER SUGAR CANE 48C



MATERNAL SISTER OF LOT 72



MATERNAL BROTHER OF LOT 72

## MADER **STEELHORN** 370L

24 July 2023 • MDR 370L • BPG1464968

**Homo Polled, Homo Black**

EPD	EPDs										Carcass EPDs		
	CE	BW	WW	YW	Milk	MCE	MWW	API	TI	CWT	REA	Fat	Marb
10.9	1.7	83.4	122.9	14.9	6.4	56.6	114.0	75.7	24.1	1.02	-0.08	-0.08	
Breed Rank	25	20	30	30	100	25	90	45	30	60	15	85	65

CE	BW	205 Wt.	Jan 10 Wt.	WPDA
78	703	1450	2.69	

**CE**



-A calving ease prospect with a 78lb BW, and ranking in the top 20-25% for CE and BW  
 -Very small skulled, smooth shouldered, light boned, yet still carries a lot of natural rib shape and muscle definition  
 -His dam is a massive bodied cow, whose last calf just sold in our Ladies Night Sale for \$16,000 to Sunny Valley Simmentals



# 73

TJSC BOONE PICKENS 46C

**SIRE:** MADER SON OF ANARCHY 144H  
LFE BS SHEILA 82A

SVS DYNASTY 915G

**DAM:** MADER OPAL 49J  
MADER OPAL 210B



MADER OPAL 210B



MADER SON OF ANARCHY

## MADER MAXIMUS 359L

7 July 2023 • MDR 359L • BPG1464963

**Homo Polled, Homo Black**

EPD	EPDs										Carcass EPDs			
	CE	BW	WW	YW	Milk	MCE	MWW	API	TI	CWT	REA	Fat	Marb	
7.6	3.4	88.8	130.3	18.5	3.2	62.9	103.9	72.8	31.8	0.94	-0.9	-0.23		
Breed Rank	55	50	15	20	95	70	65	75	45	25	35	75	100	

BW	205 Wt.	Jan 10 Wt.	WPDA
84	740	1400	2.41

**CE**



-A moderate beef machine here, that offers a lot of style through that front third, loads of body capacity, a big hip, and a very athletic structure  
 -His dam is just a young female in the herd, with an ideal udder design, a big foot, and a cow you really appreciate to analyze  
 -His pedigree and stats show that he should add weaning weight to his calves while still offering adequate calving ease

# 74

TJSC BOONE PICKENS 46C

**SIRE:** MADER SON OF ANARCHY 144H  
LFE BS SHEILA 82A

LFE THE RIDDLER 323B

**DAM:** MADER APHRODITE 316D  
JNB BLACK APHRODITE 13A



MATERNAL BROTHER OF LOT 74



MATERNAL BROTHER OF LOT 74

## MADER SAVAGE KING 328L

18 June 2023 • MDR 328L • BPG1464948

**Homo Polled, Homo Black**

EPD	EPDs										Carcass EPDs			
	CE	BW	WW	YW	Milk	MCE	MWW	API	TI	CWT	REA	Fat	Marb	
10.3	2.8	81.5	121.4	15.6	6.2	56.4	112.6	72.0	21.1	0.86	-0.09	-0.13		
Breed Rank	30	40	40	35	100	25	95	50	50	70	55	65	80	

BW	205 Wt.	Jan 10 Wt.	WPDA
82	652	1545	2.63

**CE**



-Here is a bull that could be utilized in the heifer pen or on cows to decrease birthweight  
 -Very smooth fronted and small headed, lighter in his bone, and long spined  
 -Combining Son of Anarchy with Riddler adds maternal characteristics such as udder quality, milking ability, and vigour at birth





# 75

TJSC BOONE PICKENS 46C  
**SIRE:** MADER SON OF ANARCHY 144H  
 LFE BS SHEILA 82A  
 TNT TOP CUT P274  
**DAM:** MADER TOP FLIGHT 125Y  
 CG BLACK OPAL 652S



MATERNAL BROTHER OF LOT 75



MATERNAL BROTHER OF LOT 75

## MADER ELEVATION 371L

28 July 2023 • MDR 371L • BPG1464969

**Homo Polled, Homo Black**

EPD	EPDs								Carcass EPDs				
	CE	BW	WW	YW	Milk	MCE	MWW	API	TI	CWT	REA	Fat	Marb
8.1	3.0	76.8	112.9	18.4	5.3	56.8	108.6	67.1	24.6	0.92	-0.10	-0.20	
Breed Rank	50	40	60	55	95	40	90	60	80	55	40	45	95

BW	205 Wt.	Jan 10 Wt.	WPDA
85	646	1410	2.58

-Here's a bull that will add that extra chrome to his offspring  
 -Very docile, travels with ease, and will cover an extra 10-15 cows for you with his size and maturity  
 -Note that his dam come from the Opal line, where udders are pristine, and production is superior



# 76

TJSC BOONE PICKENS 46C  
**SIRE:** MADER SON OF ANARCHY 144H  
 LFE BS SHEILA 82A  
 WS PROCLAMATION E202  
**DAM:** MADER VIOLET 78J  
 LFE BS VIOLET 641A



WS PROCLAMATION



LFE BS VIOLET 641A

## MADER ABSOLUTION 376L

20 August 2023 • MDR 376L • BPG1473296

**Homo Polled, Homo Black**

EPD	EPDs								Carcass EPDs				
	CE	BW	WW	YW	Milk	MCE	MWW	API	TI	CWT	REA	Fat	Marb
11.8	1.3	87.3	131.2	19.3	6.5	63.0	128.5	81.2	22.5	0.70	-0.07	0.02	
Breed Rank	15	20	20	20	90	25	65	10	10	65	90	95	25

BW	205 Wt.	Jan 10 Wt.	WPDA
78	683	1400	2.57

-Note this bull is almost a fall born bull versus his pen mates being more June/July  
 -A tidy package being very attractive and smooth through that front end, he carries lots of lower rib shape, is long made, and really travels smoothly  
 -He stems from the calving ease Son of Anarchy, and is put onto the short gestation Violet cow family who also excel for type and kind and udder quality  
 -A 78lb BW, and ranks in the top 10-20% for CE, BW, WW, YW, API, and TI





# 77

NGDB STRUCTURE 34D

SIRE: RF SHAKEDOWN 074H  
IPU MS. COWBOY CUT 135D

CG BLACK NUGGET 25N

DAM: CG BLACK OPAL 652S  
CG BLACK OPAL 214 M



RF SHAKEDOWN 074H



FULL BROTHER OF LOT 77 & 78



## MADER EMPIRE 317L

12 June 2023 • MDR 317L • BPTG1473223

Homo Polled, Homo Black

EPD	EPDs										Carcass EPDs		
	CE	BW	WW	YW	Milk	MCE	MWW	API	TI	CWT	REA	Fat	Marb
Breed Rank	90	90	5	20	80	85	30	15	10	30	75	50	10

BW	205 Wt.	Jan 10 Wt.	WPDA
85	730	1605	2.71

CE



-Here is a real performance oriented individual that is better in real life than what his picture maybe portrays  
 -Backed by the original foundation cow, Opal 652S, who now has 100 progeny to her name, with 30-40 daughters/granddaughters/ or great granddaughters within our own herd  
 -You will want to keep all of his daughters, and Shakedown brings some added jam to the pedigree, siring calves with extra weaning weight, and loads of mass and substance  
 -This guy is stout made, round and muscular in his hip, very gentle to handle, and will be an asset to any herd of cows

# 78

NGDB STRUCTURE 34D

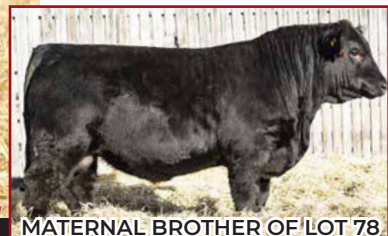
SIRE: RF SHAKEDOWN 074H  
IPU MS. COWBOY CUT 135D

CG BLACK NUGGET 25N

DAM: CG BLACK OPAL 652S  
CG BLACK OPAL 214 M



CG BLACK OPAL 652S



MATERNAL BROTHER OF LOT 78



## MADER SURVIVAL 311L

9 June 2023 • MDR 311L • BPTG1473220

Homo Polled, Homo Black

EPD	EPDs										Carcass EPDs		
	CE	BW	WW	YW	Milk	MCE	MWW	API	TI	CWT	REA	Fat	Marb
Breed Rank	90	90	5	20	80	85	30	15	10	30	75	50	10

BW	205 Wt.	Jan 10 Wt.	WPDA
83	720	1525	2.54

CE



-A full embryo brother to the bull above, offering many of the same great attributes  
 -These brothers rank in the top 5% of the breed for weaning weight, and it has common for natural Opal calves, or embryo calves to index in the top percentile for weights  
 -This guy has added length, very friendly mannered, and carries lot of middle third  
 -Utilize him for udder and foot improvement



# 79

LFE VEGAS 3145A

**SIRE:** DMF CAPITAL GAINS 828F  
DMF MS TUCKER 112Y

LFE HEAVY HITTER 352C

**DAM:** MADER BLACKBIRD 114H  
RIVERSTONE BLACKBIRD 6D



LFE HEAVY HITTER



BROTHER OF LOT 79



## MADER KINGDOM 364L

17 July 2023 • MDR 364L • BPRS1464965

**Homo Polled, Hetero Black**

EPD	EPDs										Carcass EPDs		
	CE	BW	WW	YW	Milk	MCE	MWW	API	TI	CWT	REA	Fat	Marb
9.2	3.4	75.0	113.9	20.3	5.7	57.8	94.5	65.8	31.6	0.79	-0.07	-0.01	
Breed Rank	40	50	65	55	85	35	90	95	90	25	75	95	35

BW	205 Wt.	Jan 10 Wt.	WPDA
78	711	1410	2.50



-A power packed 3/4 blood bull that expresses heaps of butt end and width over that top  
 -Sired by the powerful Capital Gains sire, and backed by breed leaders such as LFE Heavy Hitter and HF Kodiak  
 -His dam shows many years of promise, with a very high quality udder, is big bodied, and seems to raise them right over and over  
 -This guy will add hair, extra body and muscle, while still maintaining functionality

# 80

LCDR AMERICAN RED 99E

**SIRE:** CROSSROAD APOLLO 123H  
CROSSROAD ESSENCE 48E

NCB COBRA 47Y

**DAM:** MADER LADY 50G  
ERIXON LADY 202S



CROSSROAD APPOLLO



MADER LADY 50G



## MADER SIDELINED 341L

24 June 2023 • MDR 341L • PTRS1473290

**Homo Polled, Red**

EPD	EPDs										Carcass EPDs		
	CE	BW	WW	YW	Milk	MCE	MWW	API	TI	CWT	REA	Fat	Marb
8.4	2.3	85.7	129.1	29.5	7.2	72.4	123.4	79.2	25.3	1.01	-0.09	-0.02	
Breed Rank	50	30	25	20	30	15	20	20	15	55	20	65	40

BW	205 Wt.	Jan 10 Wt.	WPDA
82	795	1720	2.96



-Two maternal sisters to this guy were recently sold to Downhill Simmentals and Jensen Simmentals for \$15,000 and \$9000  
 -Here is a big stout rascal, being one of the heavy weights in the pen, and excelling on growth and power  
 -An embryo calf out of the performance oriented Appollo, and backed by one of our best red lines, the Erixon Lady 202S female, well known for small teats and unreal udders  
 -If added pounds, frame and length are at your forefront, look no further, as he boasts an 800lb WW





# 81

LFE VEGAS 3145A  
**SIRE:** DMF CAPITAL GAINS 828F  
 DMF MS TUCKER 112Y  
 MADER FREQUENCY 117Z  
**DAM:** MADER SIERRA 141D  
 CROSSROAD SIERRA 524S



## MADER ROAD HOUSE 339L

24 June 2023 • MDR 339L • PG1464954

**Homo Polled Pending, Red**

EPD	EPDs								Carcass EPDs			
	CE	BW	WW	YW	Milk	MCE	MWW	API	TI	CWT	REA	Fat
9.2	3.8	72.9	108.7	25.3	6.0	61.8	113.4	67.8	20.3	0.89	-0.09	-0.08
Breed Rank	40	55	75	65	50	30	70	45	75	45	55	65

BW	205 Wt.	Jan 10 Wt.	WPDA
85	712	1610	2.77



-One of the pen favorites all summer and spring  
 -This guy is very compact in his body type, has so much width of chest, is bold in his rib, and impressive to see his width from behind  
 -Capital Gains has stamped his offspring with a lot of potential to grow and gain, and when you add in the Sierra cow family to the bottom side of the pedigree, you get shear performance  
 -Very mild tempered, dark red, with a nice blaze



# 82

LFE VEGAS 3145A  
**SIRE:** DMF CAPITAL GAINS 828F  
 DMF MS TUCKER 112Y  
 KUNTZ SUPER DUTY 4Y  
**DAM:** MADER DEEP SOUTH 17D  
 MADER SWEET HEAT 152A



## MADER IMMACULATE 305L

7 June 2023 • MDR 305L • PG1464939

**Homo Polled, Red**

EPD	EPDs								Carcass EPDs				
	CE	BW	WW	YW	Milk	MCE	MWW	API	TI	CWT	REA	Fat	Marb
6.9	4.7	78.0	116.4	21.6	2.0	60.6	100.1	67.6	23.7	1.00	-0.09	-0.14	
Breed Rank	65	75	50	45	80	85	75	85	80	60	20	65	85

BW	205 Wt.	Jan 10 Wt.	WPDA
86	730	1645	2.75



-A big strong bull that comes from a cow who cranks them out year after year  
 -Her last two sons have been favorites and sold to Westman Farms and the Steed Brothers  
 -He has added length of body, travels on a great set of feet and legs, and has ample muscle and thickness throughout  
 -This guy will calve nicely and offer added growth and body to his calves



# 83

MADER WALK THIS WAY 224B

SIRE: MADER WALK THE LINE 92J  
IRCC DARLIN' 613D

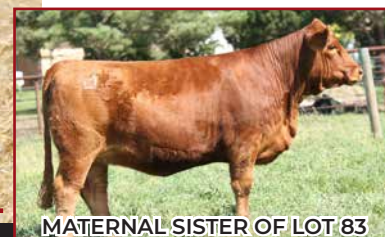
MRL GAME CHANGER 12A

DAM: MADER PROPOSAL 93C

MUIRHEADS 93F MAG 45U



MADER PROPOSAL 93C



MATERNAL SISTER OF LOT 83

## MADER ARMOUR 300L

5 June 2023 • MDR 300L • PG1464937

Homo Polled, Red

EPD	EPDs										Carcass EPDs		
	CE	BW	WW	YW	Milk	MCE	MWW	API	TI	CWT	REA	Fat	Marb
9.2	2.8	98.8	145.6	25.3	7.5	74.7	119.1	84.0	34.3	1.04	-0.11	-0.10	
Breed Rank	40	40	3	4	50	15	10	30	5	20	15	35	70

BW	205 Wt.	Jan 10 Wt.	WPDA
84	785	1585	2.64

CE



-A large framed bull with good length, depth of body, and is very agile on the ground  
 -Sired by the \$280,000 WTL sire, and backed by real hardy, heavy milking momma cow  
 -This guy ranks in the top 3-4% for WW and YW, and has almost an 800lb weaning weight which is exceptional for this summer program  
 -Utilize a bull like this to cover more cows on year one, and expect some great daughters out of him

# LOT 84

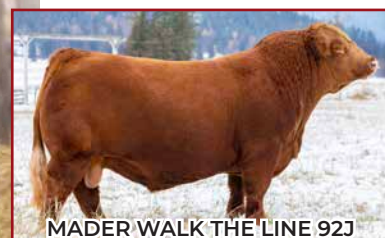
MADER WALK THIS WAY 224B

SIRE: MADER WALK THE LINE 92J  
IRCC DARLIN' 613D

RUST RIO GRANDE 7022 ET

DAM: MADER PROPOSAL 56G

MADER PROPOSAL 93C



MADER WALK THE LINE 92J

## MADER INVESTIGATOR 336L

21 June 2023 • MDR 336L • PG1464952

Homo Polled, Red

EPD	EPDs										Carcass EPDs		
	CE	BW	WW	YW	Milk	MCE	MWW	API	TI	CWT	REA	Fat	Marb
8.1	3.2	99.2	148.2	22.7	5.0	72.3			33.5	1.04	-0.09	-0.10	
Breed Rank	50	45	3	3	70	45	20		20	15	60	70	

BW	205 Wt.	Jan 10 Wt.	WPDA
79	703	1560	2.67

CE



-A 3/4 brother to the bull above as his dam is out of the same cow, and emphasizes her same great attributes such as udder quality, an easy fleshing body type, and functionality  
 -He expresses very good performance like his brother ranking in top 3% for WW and YW  
 -Walk the Line stamps his calves with a great skull and hairy ears, a long body frame, added top width, and ample muscle expression  
 -A real nice compact bull that is easy to handle and be around



# 85

MADER WALK THIS WAY 224B

SIRE: MADER WALK THE LINE 92J  
IRCC DARLIN' 613D

RUST RIO GRANDE 7022 ET

DAM: MADER FLARE 5G

MADER P MODERATION 32W



MADER FLARE 5G



RUST RIO GRANDE 7022

## MADER OUTBREAK 338L

24 June 2023 • MDR 338L • PG1464953

Homo Polled, Red

EPD	EPDs								Carcass EPDs				
	CE	BW	WW	YW	Milk	MCE	MWW	API	TI	CWT	REA	Fat	Marb
8.2	3.4	101.3	150.1	22.1	4.6	72.7				32.3	0.99	-0.08	-0.06
Breed Rank	50	50	2	2	75	50	15			25	20	80	55

BW	205 Wt.	Jan 10 Wt.	WPDA
83	701	1625	2.80



-A blood red bull that is genetically stacked, sired by WTL, and out of a gorgeous young Rio Grande female  
 -His dam is feminine, big volumed, and very easy keeping  
 -This guy has good stretch to him, loads of loin and stifle muscling, and will be a front pasture bull to admire as he continues to develop  
 -Feature red bull here

# 86

MADER WALK THIS WAY 224B

SIRE: MADER WALK THE LINE 92J  
IRCC DARLIN' 613D

KOP CROSBY 137W

DAM: MADER RAMONA 155F

CROSSROAD RAMONA 375R



MATERNAL BROTHER OF LOT 86

## MADER AWAKENING 326L

18 June 2023 • MDR 326L • PG1464947

Homo Polled, Red

EPD	EPDs								Carcass EPDs				
	CE	BW	WW	YW	Milk	MCE	MWW	API	TI	CWT	REA	Fat	Marb
7.9	3.6	95.6	139.7	24.6	6.6	72.4	113.4	79.9	34.2	1.02	-0.11	-0.14	
Breed Rank	55	55	5	10	55	20	20	45	15	20	15	35	85

BW	205 Wt.	Jan 10 Wt.	WPDA
80	638	1510	2.55



-A more compact, moderate framed bull here, with a very sound structure and very mobile  
 -His dam has been a heavy milking cow that seems to have a good, saleable calf year after year  
 -Utilize this bull to get out and cover some ground, being capable of breeding more cows the first year, and having great libido like these extra age bulls have  
 -This guy is more nervous when singled out and seems to hang to the back of the group. A cowboy bull he is, and if handled properly, will go out and work great

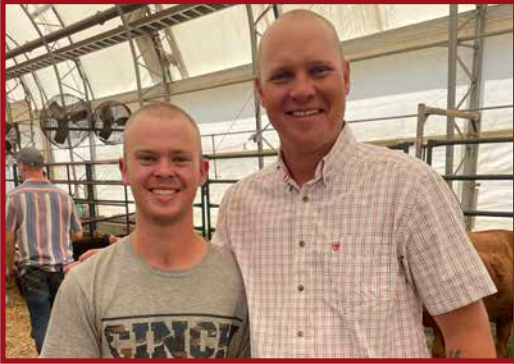


# JUST RANCHIN'...





# KIDS AND COWS...







Dr. Waylon Wise

1626 Railway Street  
Box 288  
Crossfield, AB  
T0M 0S0

Office: (403)946-4567  
Cell: (403)369-8823  
Fax: (403)946-5529  
drwise@gmail.com



Office: 403-335-8042  
Niall: 403-507-3432  
Grant: 403-894-1662

Site 16 Box 18 RR1  
Didsbury, AB  
T0M 0W0

nrichmondrepairs@gmail.com  
www.richmondequipment.ca

## Israelson Forage Inc.

Chris Israelson  
Box 231  
Didsbury, AB  
T0M 0W0  
403.994.0561

### Brittany McAllister

Relationship Manager  
ATB Business Banking

Mobile 403-875-1200  
bmcallister@atb.com

4962 50 Street  
Innisfail, AB T4G 1S7

### Brandi-Rae Mandel

Account Officer  
Office 587-219-0254

bmandel@atb.com

atb.com

Chris C. Simpson, CPA, CA  
PARTNER

PH. 403.843.3608  
FAX 403.843.4616

4714 - 50 Avenue  
P.O. Box 317  
Rimby, AB  
T0C 2J0

chris.simpson@mnp.ca  
mnp.ca



Member of Praxity, aisa  
Global Alliance of Independent Firms



## KODIAK BBQ

Tom Jackson  
403.638.7321

## CASUAL LABOUR INC.

LINDSEY STECYK

403.850.8654

Box 412  
Crossfield, AB T0M 0S0

Specializing in Farm  
Buildings

lindseystecyk@gmail.com



DAN KEMMERE 403-994-2222  
TYSON GARDNER 403-586-1598  
TYKEMELECTRIC@GMAIL.COM

RESIDENTIAL COMMERCIAL INDUSTRIAL MAINTENANCE



a Nutreco company



Kyle O'Neill  
Sales Representative

T. +1 403 556 3395  
C. +1 403 586 0804  
kyle.o'neill@hiprofeeds.com

F. +1 403 556 8660

5902 - 48th Ave, Olds, Alberta  
www.trouwnutrition.ca | www.hiprofeeds.com

Dale Schaeffer  
President  
dale@westernlitho.ca  
Direct: 306.546.7430  
Cell: 306.537.5664



Bus: 306.525.8796  
or 1.877.475.4846  
Fax: 306.565.2525  
www.westernlitho.ca

300 Dewdney Avenue  
Regina, SK S4N 0E8

## Davis-Rairdan

P.O. Box 590  
Crossfield, Alberta  
Canada T0M 0S0  
Phone (403)946-4551  
Fax (403)946-5093

Website  
davis-rairdan.com  
email  
embryos@davis-rairdan.com



Tanya Van Otterloo

Relationship Manager  
Directrice des relations d'affaires

C 403-415-6217 T 403-556-8177 tanya.vanotterloo@fcc-fac.ca  
350-6900 46th Street Olds AB T4H 0A2  
Customer Service Centre / Centre de service à la clientèle 1-888-332-3301



RANDY LANDIS  
BOHRSON MARKETING  
KAMLAH FARMS  
HUNT LEGACY FARMS  
FLETCHER CATTLE CO.  
SAWLEY RANCHES  
WOLF CREEK FARMING  
HANSEN RANCHES CATTLE CO  
KMR SIMMENTALS  
CAMPSTOOL CATTLE CO  
ROCKIN' G RANCH  
HAMAN RANCH  
MIKE WALDNER  
FLETCHER LAND & CATTLE  
Y2 CATTLE CO.  
TROUT CREEK RANCH  
BLUE RIDGE COLONY  
KARI & CURT TOPHAM  
JON RAIRDAN  
MOUNTAIN VIEW COLONY  
BUYER LIVESTOCK  
STAFFORD BEZACK  
SAMMONS LAND & CATTLE  
CALVIEW FARMS  
VV COLONY FARMING  
LYNDON CREEK RANCH  
SILBER SPRINGS FARMING  
GAWAZUK FARMS  
THOMPSON LIVESTOCK  
MCNAB CATTLE CO.  
BAR DOWN CATTLE  
HILLTOP CATTLE CO.  
DAYBREAK FARMS  
HEPPLER FARMS LTD.  
STAHLVILLE FARMING  
KLAUDT RANCHES  
LOGAN YOUNG  
SKIDMORE FARMS

JAMIN SEVERSON  
HAVENCREST FARMS  
MURPHY FARMING CO.  
KOHUT FARMS  
TINDAL FARMS  
BRIAN KASHA  
L & J MURRAY RANCHES  
ROB SCOTT  
RICHARD STEED  
RICKS SMITH  
WIEST FARMS  
TURTLE MOUNTAIN REDS  
SENGAUS BROS  
PAYDIRT AG VENTURES  
PRAEKER AG LTD  
FLYING V CATTLE CO  
ALM RANCH  
BILL TINDAL  
KAMPEN CATTLE CO  
RILEY RANCH  
CHRIS FERRARO  
MAX TATESON  
CC RANCH  
JK BAR RANCH  
WESTMAN FARMS  
ROSICKY RANCH  
BROADVIEW RANCH  
RILEY EVARTS  
WAYNE YOUNG  
DAKOTA BEAZER  
RIVER ROCK ANGUS  
DOWNHILL SIMMENTALS  
TSN LIVESTOCK  
PIESCHEL FARMS  
JOHNSON FARM SIIMMENTALS  
JENSEN SIMMENTAL  
MAPLEHEDGE FARMS  
PEARSON FARMS

FRASER & HEATHER DALEY  
JK FRASER  
SUNNY VALLEY SIMMENTALS  
CHITTICK FARMS  
HEISTAD FARMS  
RIVERSIDE FARMS  
TRIPLE R SIMMENTALS  
HARVIE CREST CATTLE CO.  
KD'S SIMMENTALS  
BAR CL & 2K SPRINGS  
WESTHILL RANCH SIMMENTALS  
SOUTHPAW CATTLE CO.  
OCKERMAN SIMMENTALS  
TANDEM T FARMS  
NASH DETTMER  
DUSTY LAND RANCH  
OAKVIEW SIMMENTALS  
KCH CATTLE CO  
GALE CATTLE CO  
BAR 17 LITTLE VALLEY  
HI TECH FARMS  
MAXWELL SIMMENTALS  
RANCIER FARMS  
KIM PURICH  
SILVER LAKE FARMS  
BLACK RIVER FARMS  
COULEE CROSSING  
COSSETTE SIMMENTALS  
EAGLE RIDGE SIMMENTALS  
DESTINY SIMMENTALS  
LA RANCH  
SIMON LEPAGE  
CORNER STONE CATTLE CO  
HALL CATTLE CO  
SATHER SIMMENTALS  
WILLOWDALE SIMMENTALS

**TERMS:** The terms of the sale are cash or cheque payable at par. Settlement to be made immediately after the completion of the sale. The right of property shall not pass until after settlement is made. All settlements must be made with the clerk of the sale before any cattle will be released. All monies are in Canadian funds.

**BIDS:** Every animal entering the sale ring will be sold to the highest bidder.

**DISPUTES:** In cases of disputes, bidding will be reopened between the parties involved. If no further bid is made, the buyer will be the person from whom the auctioneer accepted the last bid. The auctioneer's decision is final.

**ANNOUNCEMENTS:** All announcements made from the auction block will take precedence over the printed matter in the catalogue. Buyers are therefore cautioned to pay close attention to any such announcements.

**INSURANCE:** Will be available sale day. Animals become the property of the buyer as soon as sold. Bulls to be wintered must be insured.

**SHIPPING:** Assistance will be given in arranging trucking after the sale but no risk is assumed by the Auctioneer or Seller. Expenses incurred are the responsibility of the purchaser. Purchasers are requested to furnish shipping instructions when making settlement. If you need assistance please contact the seller.

**CERTIFICATE OF REGISTRY:** Registration or recordation papers will be transferred to the new owner if requested at time of payment. Cattle will not be transferred until paid for in full.

**SEMEN RESERVE:** The seller reserves the right to draw semen on any bull in the sale for in herd use only at the cost of the seller and prior to delivery.

**ACCIDENTS:** Although every precaution will be taken to protect the safety and comfort of buyers, neither the sale manager, nor the auctioneer assume any responsibility in this matter and disclaim any liability, legal or otherwise, in the event of accident or loss of property.

**LIABILITIES:** All persons attending the sale do so at their own risk and sellers assume no liability, legal, or otherwise, for any accidents occurring in or about the premises.

**EXPORT TESTING:** Required health certificates for cattle being exported will be provided.

**BREEDING GUARANTEE:** All animals are guaranteed to be satisfactory breeders in accordance with the respective breed association bylaws. No guarantee is given a bull's semen will freeze. Any female that is subject to embryo transplant shall cause this guarantee to be null and void. Guarantee does not apply to animals who after the sale are not properly handled and cared for, or injured or sick. They cannot be returned to us if not in a sound, healthy condition. At no time shall the seller's liability exceed the purchased price of the animal.

**RIGHTS & OBLIGATIONS:** The above terms & conditions of the sale shall constitute a contract between the buyer & seller & be equally binding to both. Resale of animals following purchase in this sale shall constitute a separate transaction & the rights & obligations of the two parties connected thereto are not covered by the terms & conditions of this sale. In the event of default on any part of the terms & conditions covering this sale by either the buyer or the seller, it shall be the responsibility of the buyer or the seller to investigate any action necessary to bring about a fair settlement of any claims arising from this sale and to be responsible for any & all costs involved therein.



**MADER**  
*Ranches*

CANADA		POSTES
POST		CANADA
Postage paid		Port payé
Letter-post		Poste aux lettres
1013178		

Request Return To:  
Box 1 Site 12 RR2  
Carstairs, AB T0M 0N0

Time Sensitive Material

**M**

**BULL  
POWER SALE**